



<https://yamaga-blanks.com/>

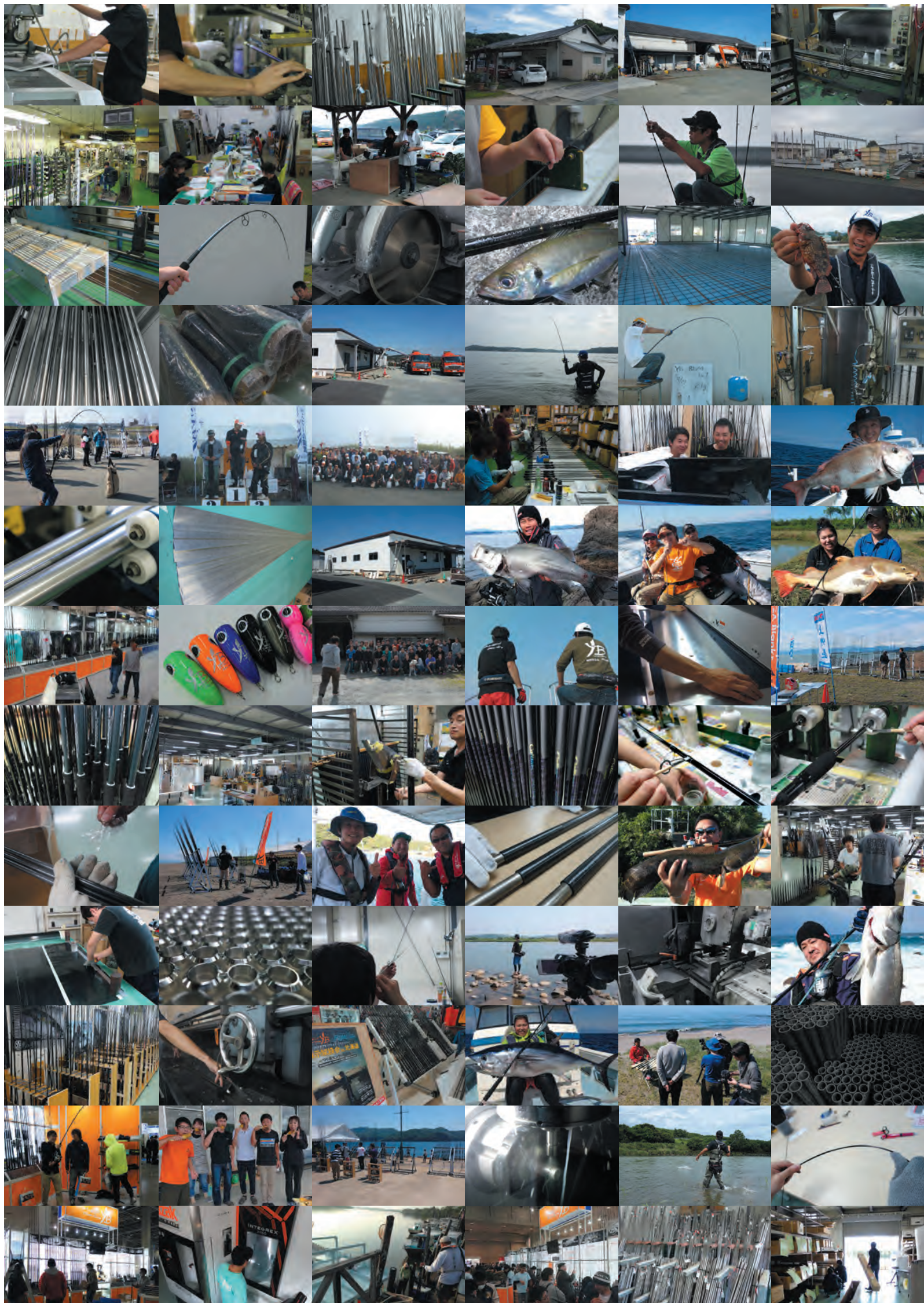
YAMAGA Blanks Made in Japan

Dealer



2020
YAMAGA Blanks PRODUCT / Made in JAPAN
English version





Keep up the history of rod building

In 2020, YAMAGA TSURIGU Co., LTD which is company of YAMAGA Blanks will mark the 30th anniversary since we have been in this business.

As a beginning of our business, we have been devoted as a finisher and assembler.

We believe that machine tools which is required for rod building are not ready-made.

So, at the very beginning, we had to find mechanic who can be trusted and build up the machine with them while adjusting the details repeatedly.

Even after we have built own oven for carbon rod, never ever stop developing the machine to minimize errors as possible. Of course, same applies to the craftworker who involved with rod building though.

Now we have installed new machine tools to move forward and keep challenging to develop the excellent products for long time periods.

We think that continuous effort for developing make factory's quality and ability increase.

This is not story only factory of fishing rod but also all of factory of industrial category. Even though the time have been past and we faced generational change of craftsman, knowledges, skills, and techniques will be carried on into next generations.

Of course, we are keeping in mind one important thing that we are definitely required to make an effort for developing ourselves and factory.

Especially, manufacturing fishing tackle is one of the particular kinds.

As you know that fishing is quite uncertainty activity and there are so many tactics. If we have been just planed and develop products without any advice or experiences of anglers who fish in tough situations.

And of course, we fish with our products to get inspiration and impression for increasing the image of new products.

This is how we have been "manufactured" and how we are going to "manufacture" fishing rod.

Although 30 years have been past already and things surrounding us have been changed a lot, our corporate mission have never ever been changed.

"Build excellent fishing rod"

We will never stop making an effort to develop factory and ourselves.

YAMAGA
Blanks **YB**
Made in JAPAN

YAMAGA TSURIGU Co.,LTD. / SINCE 1990
30th Anniversary



Light Game

BlueCurrent III
Strive for a New Era

BlueCurrent TZ/NANO
Slip Out of the Boredom Days!!

The concept of BlueCurrent series is “Versatility” to aim various target in various situation.

For example, “The target”. You have chance to hook up Horse mackerel, Mebaru, Black sea bream, Seabass and Rockfish kind and you might be able to get unexpected big monster when you fish with jig head weight 1g.

And “The method”. If you aim Horse mackerel or Mebaru which are popular target of light game category, there are many choices of method as such as jig head, wind action, Carolina rig, plug, vibration and metal jig.

If you wish to let yourself adjust situations you are facing with just “one rod”, we believe that fishing rod will be required “Versatility”.

The ideal rod that we think for light game category is that will expand your imagination. Which means that the rod will not be supposed to limit yourself. We know that anglers will always reach beyond our imagination.

For helping to expand angler's imagination, we always pursue “comfortability” that you feel when you cast, manipulate lures and fight with lively fish.

We believe that the element which is truly required for light game rod is “excellent feeling” when you fish with it and we also know that will develop skills and techniques of us and anglers.



2020 New Model

BlueCurrent III
Strive for a New Era

In 2020, BlueCurrentII reborn as BlueCurrentIII. This is not mere model change. This is kind of numbering which means that designing of BlueCurrent series get into the third generation. The most important elements that YAMAGA Blanks have been thinking are characteristic and identity of designing and factory. We believe that combination of these two factors that are composed us is quite unique. Especially BlueCurrent series are one of the representative products of YAMAGA Blanks which have been reflected essential part of techniques and experiences as a “Craftman”. The renew of BlueCurrent series have meanings that core of designing have been developed. We have aimed to achieve broadness of release range, bending like seamless to keep tension, and quickness and sharpness as work as your extended arm for BlueCurrentIII series. So that we have integrated category of BlueCurrent and BlueCurrent TZ series as reconstruction. We have tested these BlueCurrentIII for a long time periods to get tidemark. And we present this new series to let you feel our universal spirit as a Craftman.



BlueCurrent III / Light Game Series / 11 Line up
Target / Horse Mackerel・Rockfish・Black Sea Bream etc

Spinning model 8 Line up

New BlueCurrent III 53 Spinning Model



53 have been designed in 2 pcs to be carried anywhere you want. Once you fished with it, you will be surprised that ability to get the picture of details and situation inside of the water. Even when you fish with jig head under 1g, you can sense the slightly changes of current and give the action as you wished. Which means that you will always know what you are doing and what is happening under the water.

Lure: MAX 4.5g (JH 0.1~4.5g) Line: PE 0.06~0.3/NY・FC 1~3lb
Length: 1610mm(CL:835mm) Weight: 53g Price:

Guide: SiC-S stainless frame K guide(Fuji) Section:2pcs (Put over Ferrule)
Reel seat: VSS16(Fuji) Suitable reel size D:1000~2000 / S:500~C2000



New BlueCurrent III 510 Spinning Model



This is tuned to be used for jig head game around 0.5g~1.5g with comfortable feeling. Especially even when you fish with jig head around 1g in strong wind, you will not lose performance of casting and manipulating. If you could take advantage of that sharpness and moderate stiffness, you can twitch and jerk aggressively to catch selective one even in day game.

Lure: MAX 4.5g (JH 0.3~4.5g) Line: PE 0.06~0.3/NY・FC 1~3lb
Length: 1775mm(CL:915mm) Weight: 56g Price:

Guide: SiC-S stainless frame K guide(Fuji) Section:2pcs (Put over Ferrule)
Reel seat: VSS16(Fuji) Suitable reel size D:1000~2000 / S:500~C2000



New BlueCurrent III 63 Spinning Model



This is short stick which enable you to fish with jig head around 0.5g~3g while getting enough distance to reach the spot that fish might be there.The sharpness of blanks enables you to make jig head move as you wished and you will be able to strike instantaneously as soon as you sensed bite of target. The flexibility and sensitivity of blanks transmits slightly changes of current, vital information and a sense of existence of jig head.

Lure: MAX 5g (JH 0.3~5g/Plug 1.6~3.5g) Line: PE 0.06~0.3/NY・FC 1~3lb
Length: 1910mm(CL:985mm) Weight: 59g Price:

Guide: SiC-S stainless frame K guide(Fuji) Section:2pcs (Put over Ferrule)
Reel seat: VSS16(Fuji) Suitable reel size D:1000~2000 / S:500~C2000



New BlueCurrent III 69 Spinning Model



We have designed tip and belly section of this 69 very carefully to manipulate jig head and plug exactly as you wished. Tip and belly section have been applied moderate stiffness for achieving high sensitivity to transmits small vital information and slightly changes of current and sharpness to twitch and jerk jig head aggressively. Also, if you really wish to fish with plug, we recommend you to take this 69. Of course, you can take 69 for light game off the boat as well.

Lure: MAX 7g (JH 0.3~7g/Plug 1.6~5g) Line: PE 0.08~0.4/NY・FC 1~4lb
Length: 2070mm(CL:1065mm) Weight: 66g Price:

Guide: SiC-S stainless frame K guide(Fuji) Section:2pcs (Put over Ferrule)
Reel seat: VSS16(Fuji) Suitable reel size D:1000~2000 / S:1000~C2000



New BlueCurrent III 74 Spinning Model



Grip a.280mm b.345mm

If you wish to fish with various kind of method in various situation with one rod, this 74 will be the one for sure. 74 can handle all of method for light game fishing such as jig head, sinker, metal jig, and plug at your will. High sensitivity will not be lost even if you search target deeper than 10m. You will definitely be able to feel what is “BlueCurrentIII” like once you fish with this 74.

Lure: MAX 10g (JH 0.3~7g/Rig 1~10g/Plug 1.6~7.8g)

Line: PE 0.1~0.5 / NY・FC 1~5lb

Length: 2235mm(CL:1145mm) Weight: 71g Price:

Guide: SiC-S stainless frame K guide(Fuji) Section:2pcs (Put over Ferrule)
Reel seat: VSS16(Fuji) Suitable reel size D:1000~2000 / S:1000~2500



BlueCurrent III 76 Stream Spinning Model ※Only design have been changed from previous model



Grip a.290mm b.355mm

This 76 Stream have been designed for various kind and size of plugs as such as small one for mackerel and medium size for seabass or black sea bream. Moderate stiffness and comfortable recovery speed which is applied on tip and belly section let you manipulate top water plug, minnow or sinking pencil at your will for sure. If you are going to aim target hidden in current with plug, we recommend you to take this specialized rod for plugging game.

Lure: MAX 12g (Plug 1.6~12g) Line: PE 0.3~0.8

Length: 2290mm(CL:1175mm) Weight: 81g Price:

Guide: SiC-S stainless frame K guide(Fuji) Section:2pcs (Put over Ferrule)
Reel seat: VSS16(Fuji) Suitable reel size D:2000 / S:2000~2500



New BlueCurrent III 711 Spinning Model



Even if you cast small jig head a long distance, you will not lose your sense to feel movement of jig head with this 711. Also, 711 which is categorized in long length model though, transmits information of underwater world and vital information constantly even in rapid water or deep area. Flexible and sensitive tip section will let target bite your jig head without strangeness and powerful butt section will lead you assured landing.

Lure: MAX 11g (JH 0.5~7g/Rig 2~11g) Line: PE 0.2~0.6

Length: 2425mm(CL:1245mm) Weight: 81g Price:

Guide: SiC-S stainless frame K guide(Fuji) Section:2pcs (Put over Ferrule)
Reel seat: VSS16(Fuji) Suitable reel size D:1000~2000 / S:1000~2500



New BlueCurrent III 82 Spinning Model



Grip a.325mm b.390mm

This 82 have been tuned as sharper to get more distance than previous model. Although butt section has been enhanced, whole blanks bend smoothly and recover powerfully. On the other hand, sensitiveness and flexibility of tip section have been sharpened to transmits information that angler needs. You can handle not only plugs around 7~9cm to aim seabass or black sea bream but also of course use jig head up to 20g with swimming action to aim rockfish.

Lure: MAX 20g (JH 2~20g/Float 3.3~20g/Jig 2~20g/Rig 2~20g/Plug 2~15g)

Line: PE 0.3~0.8

Length: 2495mm(CL:1280mm) Weight: 83g Price:

Guide: SiC-S stainless frame K guide(Fuji) Section:2pcs (Put over Ferrule)
Reel seat: VSS16(Fuji) Suitable reel size D:2000 / S:2000~2500



BlueCurrent
Icons



Jighead
(~3g)



Jighead Heavy
(3g~)



Sinker Caro



Float Rig



Plugs/include for top water
(With action)



Sinking pencil
/include for top water
(retrieving)



Metal Jig

Grip about signage for length of grip

● a Length from reel foot to end of grip when reel is equipped
● b Whole length of grip

Reel Suitable reel size

Please refer to these suggestions as a rough indication depend on specification of line MAX.Please note that indication does not mean to restrict your choice of reel.

ICON signage for Icons

● JH
● JH
● CARO

The Icons on specifications stand for the lure which is match well with rod.
Best match designated in red.
Substitute in blue.
Please refer to these Icon as rough indication depend on characteristics of each rods.



Overhead reel model 3 Line up

New BlueCurrent III 53/B Overhead reel Model



Grip a.200mm b.305mm

This is 2 pcs overhead model to aim selective and spooky target at close range. Even if you have to use jig head under 1g, you can feel the weight of it when you cast and manipulate and also you can get enough distance to reach targets comfortably. As taking advantage of overhead tackle, you can keep tension of line while letting jig head fall into the range where the target must be there.

Lure: MAX 4.5g (JH 0.5~4.5g) Line: PE 0.3~0.5 / NY・FC 3~5lb

Length: 1610mm(CL:835mm) Weight: 67g Price:

Guide: SiC-S stainless frame K guide+SiC-S titanium frame RV Guide on butt guide(Fuji)

Section:2pcs (Put over Ferrule)

Reel seat: PMTS17(Fuji) Suitable reel size・Overhead reel for Finesse game

New BlueCurrent III 69/B Overhead reel Model



Grip a.255mm b.360mm

This is the standard model of overhead series that let you cast and manipulate jig head and plug as exactly as you wished. Tip section which have been loaded flexibility and sensitivity will transmits vital information clearly and belly section that have moderate stiffness make light wind action comfortably. Especially when you fish with plug, the potential of 69 overhead model will be pulled out.You will notice that you can give the action to plug as exactly as you have planned.

Lure: MAX 7g (JH 0.8~7g/Plug 1.6~5g/Rig 1~7g)

Line: PE 0.3~0.6/NY・FC 3~6lb

Length: 2070mm(CL:1065mm) Weight: 77g Price:

Guide: SiC-S stainless frame K guide+SiC-S titanium frame RV Guide on butt guide(Fuji)

Section:2pcs (Put over Ferrule)

Reel seat: PMTS17(Fuji) Suitable reel size・Overhead reel for Finesse game

New BlueCurrent III 82/B Overhead reel Model



Grip a.320mm b.425mm

Although this is over 8ft long, you can handle like it is 7.6ft long thanks to sharpness and lightness of blanks themselves. Tip section which have flexibility to manipulate lure delicately link to butt section which is strong enough to stop the powerful run of large target. This deserved to be called all mighty overhead rod to cover various situations and target such as surface game for seabass or black sea bream, rock fish game and mackerel of course.

Lure: MAX 20g (JH 2~20g/Float 3.3~20g/Jig 2~20g/Rig 2~20g/Plug 2~15g)
Line: PE 0.4~0.8 / NY・FC 4~10lb

Length: 2495mm(CL:1280mm) Weight: 93g Price:

Guide: SiC-S stainless frame K guide(Fuji) Section:2pcs (Put over Ferrule)

Reel seat: PMTS17(Fuji) Suitable reel size・Overhead reel for Finesse game



BlueCurrentIII 82



BlueCurrentIII 69



BlueCurrentIII 82



BlueCurrentIII 53B



BlueCurrentIII 82B



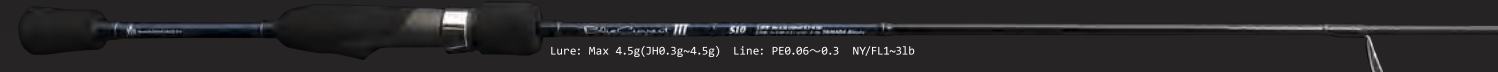
BlueCurrentIII 53B

BlueCurrent III 53 The specialized 2 pcs model for jig head game under 1g in close-range with high sensitivity.



Lure: Max 4.5g(JH0.1g~4.5g) Line: PE0.06~0.3 NY/FL1~3lb

BlueCurrent III 510 This is short rod to manipulate jig head around 1g in short-range and set hook at your will.



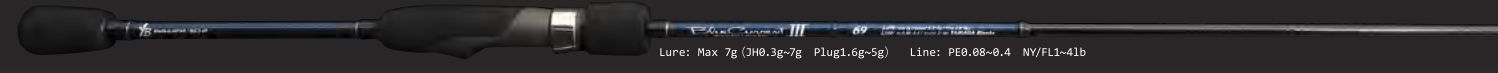
Lure: Max 4.5g(JH0.3g~4.5g) Line: PE0.06~0.3 NY/FL1~3lb

BlueCurrent III 63 The short rod to cover wide range of weight of jig head and plug



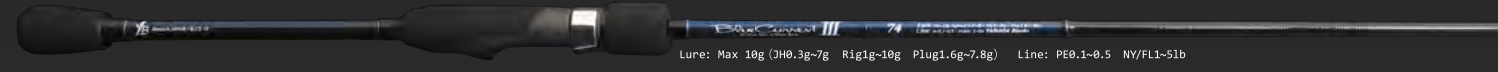
Lure: Max 5g(JH0.3g~5g Plug1.6g~3.5g) Line: PE0.06~0.3 NY/FL1~3lb

BlueCurrent III 69 This is specialized rod to fish aggressively with jig head and plug



Lure: Max 7g (JH0.3g~7g Plug1.6g~5g) Line: PE0.08~0.4 NY/FL1~4lb

BlueCurrent III 74 74 deserved to be called all-rounder to cover situation and method of light game scene.



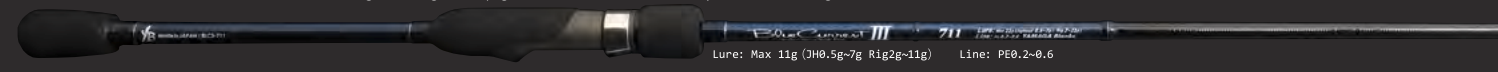
Lure: Max 10g (JH0.3g~7g Rig1g~10g Plug1.6g~7.8g) Line: PE0.1~0.5 NY/FL1~5lb

BlueCurrent III 76 Stream 76 Stream have been tuned to lure the target hidden in complex current with plug.



Lure: MAX 12g (Plug1.6g~12g) Line: PE0.3~0.8

BlueCurrent III 711 Deliver light weight of jig head to further than you have imagined without unwanted wobbles.



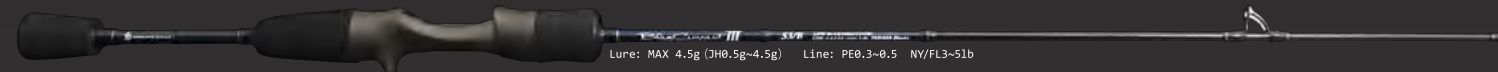
Lure: Max 11g (JH0.5g~7g Rig2g~11g) Line: PE0.2~0.6

BlueCurrent III 82 The almighty rod for method and tactics of light game category.



Lure: Max 20g (JH2g~20g Float3.3g~20g Jig2g~20g Rig2g~20g Plug2g~15g) Line: PE0.3~0.8

BlueCurrent III 53/B The finesse rod of overhead model for casting and manipulating jig head under 1g.



Lure: MAX 4.5g (JH0.5g~4.5g) Line: PE0.3~0.5 NY/FL3~5lb

BlueCurrent III 69/B This is technical overhead model for jig head and plug to aim target aggressively.



Lure: MAX 7g (JH0.8g~7g Plug1.6~5g Rig 1g~7g) Line: PE0.3~0.6 NY/FL3~6lb

BlueCurrent III 82/B The long rod that gives you incredible distance with various method of light game rigs.



Lure: Max 20g (JH2g~20g Float3.3g~20g Jig2g~20g Rig2g~20g Plug2g~15g) Line: PE0.4~0.8 NY/FL4lb~10lb

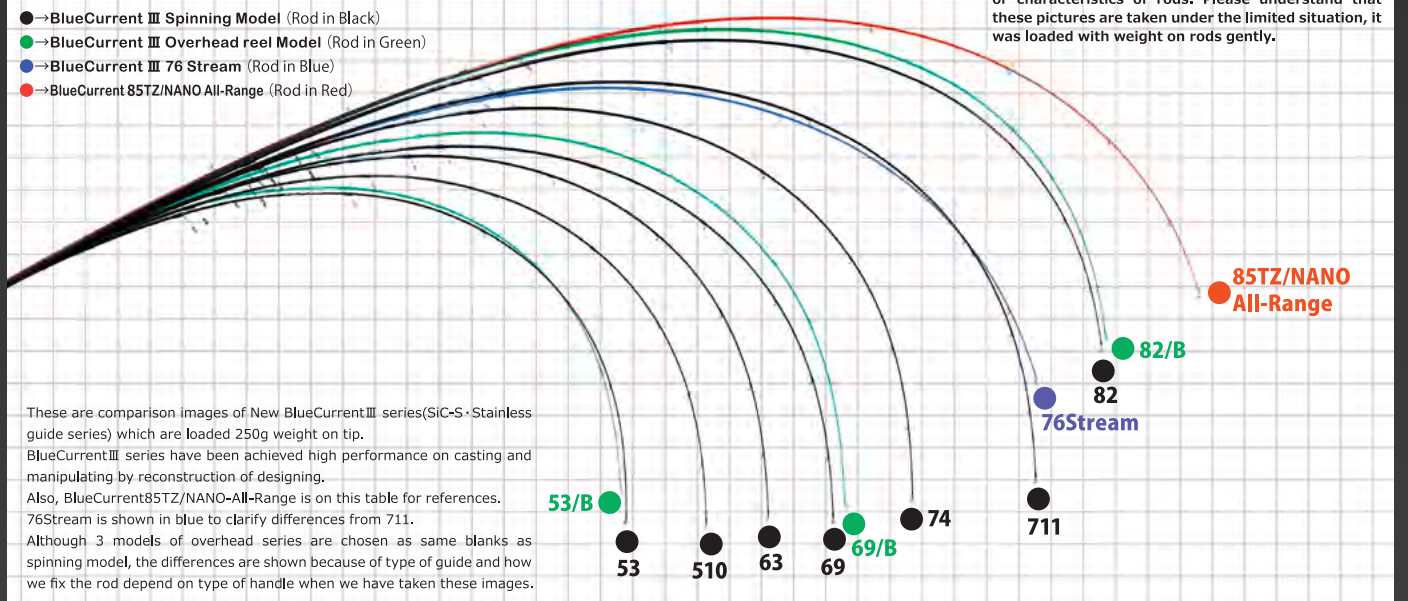
BlueCurrent III

BlueCurrent III Spinning & Overhead reel Model Bending Curve / Load 250g

Load 250g

- BlueCurrent III Spinning Model (Rod in Black)
- BlueCurrent III Overhead reel Model (Rod in Green)
- BlueCurrent III 76 Stream (Rod in Blue)
- BlueCurrent 85TZ/NANO All-Range (Rod in Red)

※These images are not illustrated on the full potential or characteristics of rods. Please understand that these pictures are taken under the limited situation, it was loaded with weight on rods gently.



These are comparison images of New BlueCurrent III series(SiC-S・Stainless guide series) which are loaded 250g weight on tip. BlueCurrent III series have been achieved high performance on casting and manipulating by reconstruction of designing. Also, BlueCurrent85TZ/NANO-All-Range is on this table for references. 76Stream is shown in blue to clarify differences from 711. Although 3 models of overhead series are chosen as same blanks as spinning model, the differences are shown because of type of guide and how we fix the rod depend on type of handle when we have taken these images.



BlueCurrent TZ/NANO

BlueCurrent TZ NANO Light Game Series / 8 Line up
Target / Horse Mackerel・Rockfish・Black Sea Bream・Seabass etc

BlueCurrent TZ/NANO series are flag ship models which are filled with our knowledge and techniques of designing blanks of light game. Carbon prepreg which NANOALLOW® technology have been applied is chosen and TORZITE ring guides which are light and less friction are loaded.

Once you fish with this series, you notice the lightness and sensitiveness, casting feel that you never get unwanted wobble and massive butt power hidden in butt section that will be increased when it is bent.

We present you various kind of rods with remarkable individuality as BlueCurrent TZ/NANO series as such as Jig Head-special which is perfect match for tiny jig head and small plug for horse mackerel or mebaru, Jig-special which is specialized for small metal jig, Stream-special to search target in current, Flex which is enable you to enjoy flexibility, and All-Range to do anything at anywhere.

BlueCurrent TZ/NANO series support anglers who will never stop exploring to find new method and tactics on your own.

TORZITE Fuji NANOALLOW



BlueCurrent 62 TZ/NANO Jighead Special



BlueCurrent 62TZ Nano have gotten sharpness within blanks themselves and once fish is on, its bend nice and smoothly from tip to butt section. Thanks to NANOALLOW® technology from TORAY, you can keep fish under control at your own will and you cast lure with minimum motion so you do not have to worry about rough condition if you choose it. We have sharpened this 62TZ up to manipulate both jig head and plug delicately with high sensitivity.

Lure: JH ~3g Line: NY・FC 1~3lb
Length: 1880mm(CL:965mm) **Weight:** 53g **Price:**

Guide: TORZITE titanium frame K Guide (Fuji) Section: 2pcs (Put over Ferrule)
Reel seat: VSS16(Fuji) Suitable reel size D:1000~2000 / S:1000~C2000

BlueCurrent 67 TZ/NANO Jighead Special



This is specialized model for jig head game which is employed high sensitivity, smoothness, and flexibility on blanks. Although it is nice and flexible, the sharpness and speed of blanks are progressed while reducing unwanted wobble of tip section. Taking full of advantage of NANOALLOW® technology, it has been achieved seamless bend curve and incredible repulsive force that let you enjoy not only big mackerel or rockfish but also even a small target.

Lure: JH ~5g / Plug ~3.5g Line: ~PE0.4 / NY・FC 1~3lb
Length: 2020mm(CL:1035mm) **Weight:** 61g **Price:**

Guide: TORZITE titanium frame K Guide (Fuji) Section: 2pcs (Put over Ferrule)
Reel seat: VSS16(Fuji) Suitable reel size D:1000~2000 / S:1000~C2000

BlueCurrent 71 TZ/NANO Jighead Special



71TZNano is most regular action in BlueCurrent Jig head special series. Although this is specialized model for jig head game, you can approach to target with slow retrieving of small plug or light rig. The sensitivity while you are retrieving is high enough to sense slightly changes of current and tiny vital information. Fish will take your lure without strangeness and blanks will bend smoother like seamless while on fighting.

Lure: JH 0.3~5g / Rig ~7g / Plug 1.6~4.5g Line: ~PE0.4 / NY・FC 1~4lb
Length: 2175mm(CL:1115mm) **Weight:** 63g **Price:**

Guide: TORZITE titanium frame K Guide (Fuji) Section: 2pcs (Put over Ferrule)
Reel seat: VSS16(Fuji) Suitable reel size D:1000~2000 / S:1000~C2000



The line up of BlueCurrent TZ/NANO series is for let you fish with various kind of lure. 62,67 and 71 which have delicate tip are good for horse mackerel and mebaru with light weight of jig head. 62 and 67 are especially good for game which retrieve with jig head and plug mainly. On the other hand, if you give the action to minnow 71 will be recommended.



72TZ/NANO Jig-Special have moderate stiffness on blanks to let metal jig move aggressively so also good to fish with variety of plugs or heavy jig head.77Stream-special will enable you to twitch continuously in current with less mistake thanks to moderate stiffness of tip and belly section. The remarkable characteristics of 83 Flex is that flexibility to keep fish calm while fighting and repulsive force pull the target to surface with ease.



The remarkable characteristics of 85All-Range and 93All-Range is versatility to manipulate many kinds of method as such as jig head, plugs or even egi. The belly section which have moderate stiffness and repulsive force will let you jerking, twitching, lift & fall and swimming action comfortably. Although 93All-Range have more power than 85All-Range, line, method and way of constructing the game are almost same. 93All-Range will be recommended for fishing which you are required distance cast.

BlueCurrent 72 TZ/NANO Jig Special



This is the special tuned model which enable anglers manipulate various weight of jigs from micro sized to 15g weight because of moderate strain of tip section. We have chosen NANOALLOW® technology from TORAY on butt section for extra muscle. Its innovative to a material from TORAY LTD to achieve a high performance of manipulation and sensitiveness. Although you might sense the strain of blanks, it will work as tenacity to land fish smoothly.

Lure: Jig 1.5~15g Line: PE 0.3~0.8
Length: 2185mm(CL:1125mm) **Weight:** 70g **Price:**

Guide: TORZITE titanium frame K Guide (Fuji) Section: 2pcs (Put over Ferrule)
Reel seat: VSS16(Fuji) Suitable reel size D:2000 / S:2000~C2500

BlueCurrent 77 TZ/NANO Stream Special



This rod which has been built with NANOALLOW® technology from TORAY is for special situation. It achieved high sensitivity and usability of various lures without losing repulsive force of rod even in the rapid current. The potentials of this rod will be shown mostly at the field where the experts likes.

Lure: Plug 2~9g / Rig 1.5~13g Line: PE 0.3~0.8
Length: 2310mm(CL:1190mm) **Weight:** 74g **Price:**

Guide: TORZITE titanium frame K Guide (Fuji) Section: 2pcs (Put over Ferrule)
Reel seat: VSS16(Fuji) Suitable reel size D:2000 / S:2000~C2500

BlueCurrent 83 TZ/NANO Flex



If you wish to deliver light weight of jig head farther than ever and manipulate it as you want, we are sure that 83TZNano will make you satisfy. Flexibility and sensitivity of blanks enable you to manipulate light weight of plug delicately even you have delivered it farther than you have expected and you can manipulate it as you are at close range. If it is rough condition at closer range of you, you can fight without anxious thanks to ability of reshaping itself speedy.

Lure: JH 0.8~5g / Rig 1.8~10.5g / Plug 1.5~8g Line: PE 0.2~0.6
Length: 2520mm(CL:1290mm) **Weight:** 73g **Price:**

Guide: TORZITE titanium frame K Guide (Fuji) Section: 2pcs (Put over Ferrule)
Reel seat: VSS16(Fuji) Suitable reel size D:2000 / S:2000~C2500

BlueCurrent 85 TZ/NANO All Range



If you want to do everything in light game category, we think that BlueCurrent 85/TZ will make your dream come true. Every range of water will be covered with light line by BlueCurrent 85/TZ which have been gotten sensitiveness and toughness. You will never lose initiative even if you hook big one up accidentally. You will be able to aim Rock Fish, Black Sea Bream, Seabass (aim from top water to deep water), Horse Mackerel or even squid.

Lure: 3~21g Line: PE 0.4~1
Length: 2570mm(CL:1315mm) **Weight:** 80g **Price:**

Guide: TORZITE titanium frame K Guide (Fuji) Section: 2pcs (Put over Ferrule)
Reel seat: VSS16(Fuji) Suitable reel size D:2000~2500 / S:2000~2500

BlueCurrent 93 TZ/NANO All Range



Actually, it is all depends on your imagination to pull out the infinite potential of this 93TZNano All-Range. We have extended length and enhanced power of 85TZNano All-Range to cover farther range and tougher target. Of course, you can use it for Horse Mackerel or rockfish, it works for black sea bream, seabass or even for squid. As we mentioned, potential of 93TZNano All-Range become unlimited depending on your skill and imagination.

Lure: 3~21g Line: PE 0.4~1
Length: 2825mm(CL:1440mm) **Weight:** 90g **Price:**

Guide: TORZITE titanium frame K Guide (Fuji) Section: 2pcs (Put over Ferrule)
Reel seat: VSS16(Fuji) Suitable reel size D:2500 / S:2500~C3000

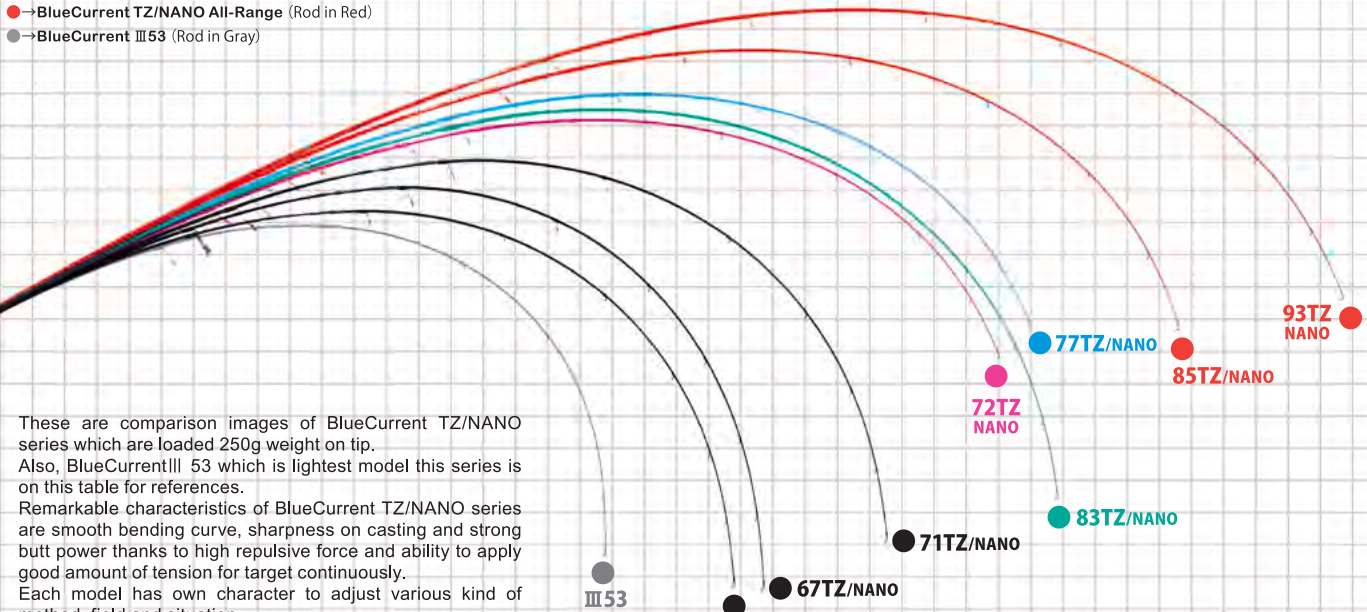
BlueCurrent TN Icons JH Jighead (~3g) H JH Jighead Heavy (3g~) CARO Sinker Caro FLOAT Float Rig PLG Plugs /Include for top water (With action) S/P Sinking pencil /Include for top water (Retrieving) JIG Metal Jig EGI Egi (#2~#3)

Main is shown in Red・Substitute is shown in Blue

BlueCurrent TZ/NANO

Load 250g

- BlueCurrent TZ/NANO JH-Special (Rod in Black)
- BlueCurrent TZ/NANO Jig-Special (Rod in Magenta)
- BlueCurrent TZ/NANO Stream-Special (Rod in Blue)
- BlueCurrent TZ/NANO Flex (Rod in Green)
- BlueCurrent TZ/NANO All-Range (Rod in Red)
- BlueCurrent III 53 (Rod in Gray)



These are comparison images of BlueCurrent TZ/NANO series which are loaded 250g weight on tip. Also, BlueCurrentIII 53 which is lightest model this series is on this table for references. Remarkable characteristics of BlueCurrent TZ/NANO series are smooth bending curve, sharpness on casting and strong butt power thanks to high repulsive force and ability to apply good amount of tension for target continuously. Each model has own character to adjust various kind of method, field and situation. Even though 3 model for jig head game is named JH-Special, high versatility is loaded to manipulate variety of lures. Of course, others have own serializability in high versatility to aim various kind of target.

※These images are not illustrated on the full potential or characteristics of rods. Please understand that these pictures are taken under the limited situation, it was loaded with weight on rods gently.



About differences between BlueCurrentIII 82 and 85TZ/NANO All-Range.

Even though the specifications of BlueCurrentIII82 and BlueCurrent85TZ/NANO-All-Range are quite similar, characteristics of blanks are totally different. 82 is very good at manipulating lures directory thanks to moderate stiffness of belly section. On the other hand, even though 85All-Range have more power on butt section than 82, whole blanks bend very smoothly for supplying comfortability to make lure move naturally when you give swimming action or lift & fall. If you wish to manipulate lure zippy with some stillness, please go for 82. If you prefer making natural swim action, 85All-Range is the one.



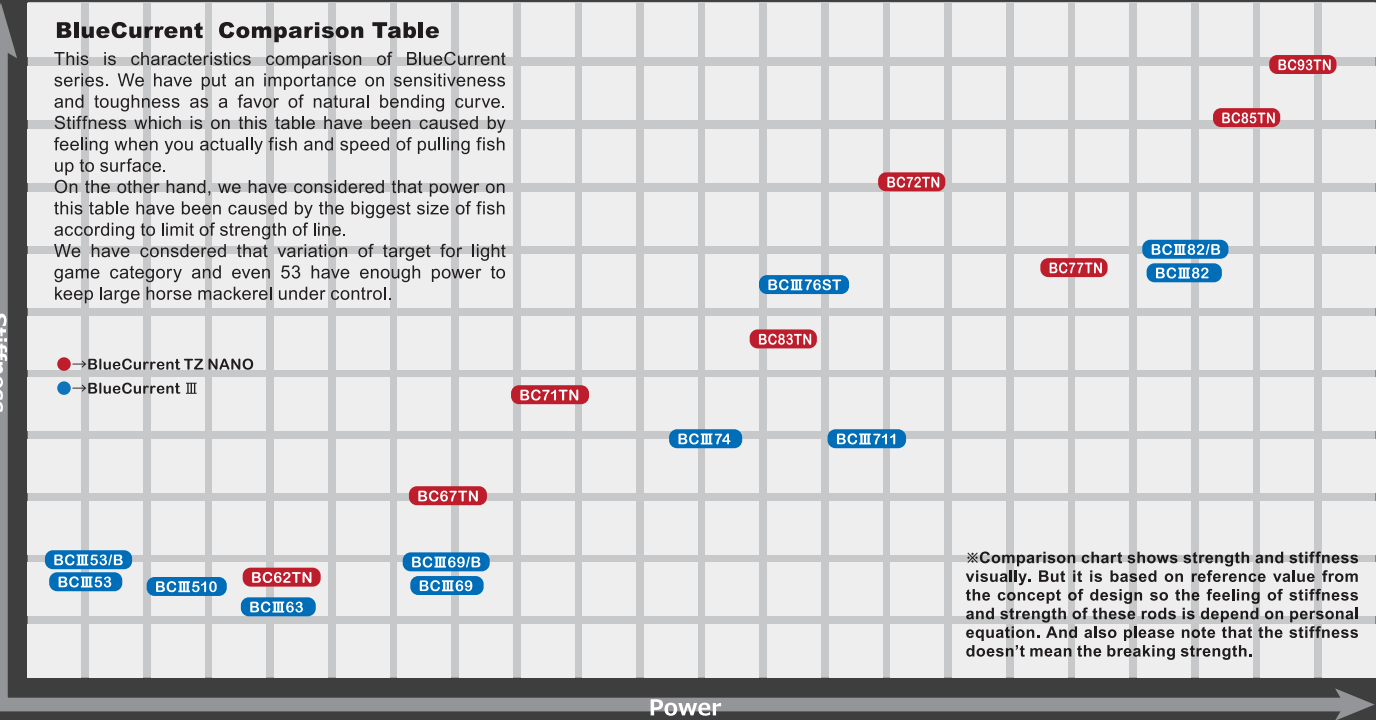
About overhead reel models of BlueCurrentIII

We have lined up 53, 69 and 82 as overhead reel models as same as spinning models. 53,69 and 82 have been selected for taking advantage of characteristics blank as overhead tackle which supply you stable reeling, adjustment of range, sensitiveness when lure is falling and nocking the bottom of sea. Although these are match for finesse style perfectly, also the potential of those will be pulled out at retrieving pencil bait slowly, sending jig head into the current naturally and searching black sea bream sitting on the bottom with heavy jig head. About 53, it is also good to be used for plugging game of trout kind.

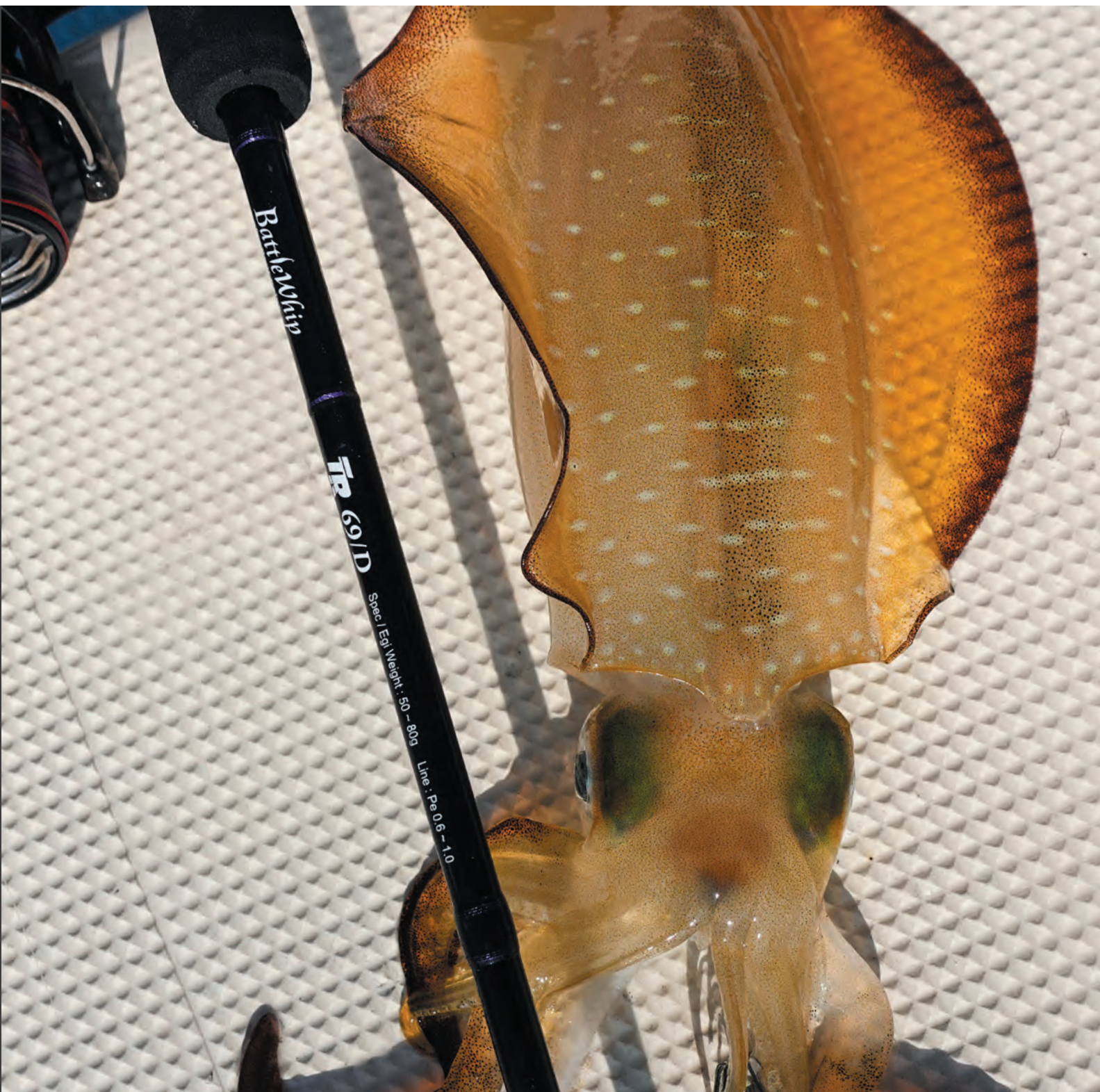
BlueCurrent Comparison Table

This is characteristics comparison of BlueCurrent series. We have put an importance on sensitiveness and toughness as a favor of natural bending curve. Stiffness which is on this table have been caused by feeling when you actually fish and speed of pulling fish up to surface. On the other hand, we have considered that power on this table have been caused by the biggest size of fish according to limit of strength of line. We have considered that variation of target for light game category and even 53 have enough power to keep large horse mackerel under control.

- BlueCurrent TZ NANO
- BlueCurrent III



※Comparison chart shows strength and stiffness visually. But it is based on reference value from the concept of design so the feeling of stiffness and strength of these rods is depend on personal equation. And also please note that the stiffness doesn't mean the breaking strength.



Eging

BattleWhip
for Boat Eging

Mebius

Calista

We think that “Eging” is particular category of lure fishing. Basically, the fish use mouth to take your lure. On the other hand, squid will “Hold” or “Touch” your lure. We believe that these complicated signals are the characteristic of Eging.

Jerk, sense signals, strike and the heaviness of squid will be transmitted to your hand through blanks. That is the most delight moment of eging scene. Squid does not run to the bottom of sea.

So, we think that we can pursue to develop tackles for eging which have been sharpened sensitiveness up utmost. Of course, you have to prepare for unexpected monsters.

That is why angler have to develop skill of choosing tackles for it. We believe that this attitude is same applies to eging from shore and boat as such as “Tip Run”, “Ika-Metal” and “Boat Eging”. Simple method but anglers will be required to develop own skill to get satisfactory results.

We have develop eging rod series both for shore and off shore to achieve comfortability for sharpening your sensation up through these blanks. And we hope that you can feel something you have never been experienced before from fishing with Eging series of YAMAGA Blanks.



BattleWhip for Boat Eging

The project of renewing “BattleWhip” series have been started since 2019 to be adjusted boat eging scene which being developed day by day.

We take advantage of skill, knowledges and experiences of designing fishing rod to shape the lineup of TipRun series, Ikametal series and also Omorig※ which are adjusted to segmentalized game.

Although we have chosen carbon solid tip first time ever as YAMAGA Blanks for TipRun series and Ikametal series, these are not only that.

We have pursued not only sensitiveness but also high comfortability for casting and manipulating exactly like Bluecurrent series.

All of these models have given own specialized character one by one to make angler sense slightly changes which is transmitted through blanks.

※Omorig is one of the method of Eging which cast sinker with small size of egi.



BattleWhip TR

Tiprun・Boat Eging Series / 3 Line up
Target / Squid

●3 types of BattleWhip TR series which have been given original character is lined up to cover various situations of TipRun eging scene. Anglers will enjoy to feel differences of sensitivity and speed of settle of tip section without unwanted wobble. If you pursue versatility, we recommend you to TR73/S. You can control speed of fall or angle with TR73/S while taking advantage of its length. Although TR69/D is the most powerful rod in this series to aim monster squid, this is not just stiff rod. You can fish with it in rapid current, deep area and various situations which you are required quickness without any stress. And TR63/N. This is for anglers who pursue high sensitivity, manipulate ability and speed of settle on tip section without unwanted wobble. Tip sections let you know slightly touch of squid visually and transmit vital information to your finger through blanks very clearly. Smooth bending curve and less wobbles on tip section make sensitiveness of blanks increase.



BattleWhip IM

IKAMETAL Series / 2 Line up
Target / Squid

●We have totally renewed Ika Metal series which have been reconsidered design of blanks and tip section that have been switched glass solid to carbon solid. New Ika Metal series have been well balanced to achieve comfortable manipulate feeling and versatility that is enable you to jerking, shaking, posing, slow lifting and slow falling at your will. Although blanks of these have been finished very light and fine, enough power have been loaded to cover various situation and seasons.



BattleWhip OR

IKAMETAL・Omorig Series / 1 Line up
Target / Squid

●This OR model have been designed to aim monster squid which is hidden the edge of lighting or conquer the tough situation that squid hardly take your egi at all. You can cast sinker with small size of egi to reach the point where the squid might be there and you can give it action exactly as you have planned. BattleWhip OR can be thrown with under hand to get distance while taking advantage of that length and also good to be used in rapid current. The potential of versatility is hidden in blanks of these models to reflect your imaginations.

Tip-Run / Carbon Solid Tip model

New BattleWhip TR 63/N (Type-N : No Look)



Grip a.295mm b.360mm

Making use of advantage of high sensitivity accumulated from light game scene, blanks transmit slightly touch of squid. This characteristic of TR63 makes you to distinguish activity of squid and to stay focused even you faced touch condition. This is for the angler who does not want to lose opportunity of catching squid. You do not have to look at tip to get indication of vital information. Blanks definitely transmits signal to your hand. All you have to do is just feel it! This 63/N will make differences for sure.

Egi: 30~60g Line: PE 0.4~0.8 Depth: 20~50m
Length: 1920mm(CL:975mm) Weight: 75g Price:

Guide: SiC-S stainless frame K guide + SiC stainless frame LDB guide(Fuji)
Section:2pcs (Put over Ferrule)
Reel seat: VSS16(Fuji) Suitable reel size D:2000~2500 / S:2500~C3000



New BattleWhip TR 73/S (Type-S : Shallow)



Grip a.310mm b.375mm

This is specialized model with high sensitivity and operability to cover from shallow to 30m depth of water. 7.3ft length of blanks will help you to stay your Egi still even you fish from mid-large boat or in situation that you are struggled in welter of the sea surface. You can fish with S-Fall techniques while taking advantage of its length. Of course, casting game is available with this versatile model. We believe that you will be able to enjoy the variety of situation and method of squid games with this TR 73/S.

Egi: 20~40g Line: PE 0.4~0.8 Depth: ~30m
Length: 2225mm(CL:1145mm) Weight: 83g Price:

Guide: SiC-S stainless frame K guide + SiC stainless frame LDB guide(Fuji)
Section:2pcs (Put over Ferrule)
Reel seat: VSS16(Fuji) Suitable reel size D:2500 / S:2500~C3000



New BattleWhip TR 69/D (Type-D : Deep)



Grip a.295mm b.360mm

This is the most powerful model in this series to cover area such as deep and rapid water. If you aim huge squid in tough area such as current runs rapidly or deep water around 40m or more, TR 69/D is the best choice. It will be bent very smoothly while accumulating huge repulsive force inside of blanks themselves to lift even squid much bigger than you have thought. This is for anglers who wish to explore untouched area for aiming massive squids.

Egi: 50~80g Line: PE 0.6~1 Depth: 40~90m
Length: 2075mm(CL:1060mm) Weight: 80g Price:

Guide: SiC-S stainless frame K guide + SiC stainless frame LDB guide(Fuji)
Section:2pcs (Put over Ferrule)
Reel seat: VSS16(Fuji) Suitable reel size D:2500~3000 / S:C3000~4000



IKA-Metal / Carbon Solid Tip model

New BattleWhip IM 69S Spinning Model



Grip a.445mm b.515mm

Thanks to sensitivity and visibility of blanks are increased for achieving the excellent results. The lightness of it let you handle this stick as your extended arm, flexibility and repulsive force provide you comfortability and toughness of butt section enable you to lift unexpected monster up to surface without anxious and burden of physical. This IM69/S will cover various situation, method and size of target with fun for sure.

Egi: MAX #25 (90g) Line: PE 0.4~0.8
Length: 2070mm(CL:1060mm) Weight: 84g※PROTO Price:

Guide: SiC-S stainless frame K guide + SiC stainless frame LDB guide(Fuji)
Section:2pcs (Put over Ferrule)
Reel seat: VSS16(Fuji) Suitable reel size D:2500 / S:2500~C3000



New BattleWhip IM 69B Over head reel Model



Grip a.430mm b.530mm

Carbon solid tip let you know vital information visibly and transmit a lot of information to your finger through blanks. Although it have flexibility and sensitivity, once you have sensed touch of squid you can strike aggressively without any delay thanks to moderate stiffness and repulsive force which also help angler to lift huge squid up from bottom of the sea. Taking advantage of IM69/B overhead model, we hope that you hunt squid as many as you have wished.

Egi: MAX #30 (110g) Line: PE 0.4~0.8
Length: 2070mm(CL:1060mm) Weight: 103g※PROTO Price:

Guide: SiC-S stainless frame K guide (Fuji) + SiC stainless frame LDB guide(Fuji)
Section:2pcs (Put over Ferrule)
Reel seat: PMTS17(Fuji) Suitable reel size D:100~200 / S:100~200



OMO-Rig / Tubular Tip model

New BattleWhip OR 72/C (Type-C : UNDER CAST) Spinning Model



Grip a.460mm b.525mm

This OR72/C have been designed to manipulate sinker weight 90g~150g comfortably. Also powerful enough butt and belly section to cast sinker up to 150 safely and comfortably. Thanks to moderate stiffness of tip section vital information of squid will be transmitted very clearly. You can search as wide as you have wished and you can sense what is going on inside of water very clearly. You will definitely enjoy this squid game as you are having jigging game with it.

Sinker Weight: CAST MAX #40 (150g)※under cast only Line: MAX PE 1
Length: 2190mm(CL:1125mm) Weight: 99g Price:

Guide: SiC-S stainless frame K guide (Fuji) Section:2pcs (Put over Ferrule)
Reel seat: VSS16(Fuji) Suitable reel size D:2500~3500 / S:C3000~C5000



BattleWhip
Icons



Boat Eging



Tip Run



IKAMETAL



OMO-RIG
IKAMETAL



Tip Run
S-fall



Castable



Red Monster
(for big squid)

Carbon solid tip is loaded to TR series and IM series. Tubular tip is loaded to OR model.



Precaution for carbon solid tip model

As we have mentioned, TR&IM series have been loaded carbon solid tip. The material of carbon solid tip is extremely delicate and fragile. So please careful with shock of impact and handle gentry when you fish and shored them with care. Although you can fish in properly use with them, it might be cause of breakage of carbon solid tip if you retrieve your lure too much or wind up knot into top guide.

Main is shown in Red Substitute is shown in Blue



Mebius / Eging Model / 6 Line up



We hope that fishing rod from YAMAGA Blanks is going to be used by much more number of anglers. That is ambition what we put into Mebius series.

It is quite difficult to keep low budget while pursuing performances and quality.

But we have succeeded to achieve those elements as making extensive use of our techniques of design and quality of factory.

That is how we build fishing rods and once you fish with Mebius series you will definitely know as much about our policy and performance of blanks.

We offer you 6 different type of character for Mebius series as such as short length, light weight model or medium heavy class to cover various situation that you are going to face.

Of course you can take one as main rod, you can also take one as a substitution for specific circumstances.

High versatility is hidden inside of blanks with high sensitivity and durability to be enable you to handle variety of lure in weight range on specifications.

The potential of versatility loaded on this series will let you aim not only squid but also variety of fish. We put our full of passion, spirit, knowledges and techniques of YAMAGA Blanks as a rod manufacturing bland into this Mebius series.



Mebius 710L



If you wish to use super fine PE line to sense slightly changes of pressure of current and lure out carefully, this sensitive short length model is the one. When squid is less activity than usual then you are required to feel slightly changes of current and need to manipulate and lure out delicately, sensitiveness which is loaded to 710 enable you to cast light weight of Egi, sense tiny contact of squid and keep squid over 2kg under control. Of course you can take 710 for fishing from boat.

Lure: **Egi 1.8~3.5 (~21g)** Line: **PE 0.3~0.6**
Length: 2390mm(CL:1225mm) Weight: 84g Price:
Guide: SiC-S stainless frame K guide (Fuji) Section:2pcs (Put over Ferrule)
Reel seat: VSS16(Fuji) Suitable reel size D:2500 / S:2500~C3000



Mebius 88L



This is the light class model which is good for short pitch jerk and jerk making use of line slack. You can cast even light weight of Egi with comfortable feeling thanks to flexibility and moderate repulsive force. So this is good to be used on sight fishing technically. Yet it have enough power to keep huge squid under control, you can manipulate Egi with less power than others. Once you fish with it you will recognize that it have gotten high potential to be used in all season.

Lure: **Egi 2.5~3.5 (~21g)** Line: **PE 0.4~0.8**
Length: 2645mm(CL:1350mm) Weight: 93g Price:
Guide: SiC-S stainless frame K guide (Fuji) Section:2pcs (Put over Ferrule)
Reel seat: VSS16(Fuji) Suitable reel size D:2500 / S:C3000



Mebius 85ML



It have been designed to be more flexible than 86M and finished to become technical rod which is enable anglers to manipulate various weight of Egi at your will. You will be able to take advantage of versatility of 85ML as such as luring out delicately on sight fishing, jerk making use of line slack and short pitch jerking. We recommend 85ML for any level of anglers as an all-rounder

Lure: **Egi 2.5~3.5 (~24g)** Line: **PE 0.5~0.8**
Length: 2555mm(CL:1305mm) Weight: 93g Price:
Guide: SiC-S stainless frame K guide (Fuji) Section:2pcs (Put over Ferrule)
Reel seat: VSS16(Fuji) Suitable reel size D:2500 / S:C3000



Mebius 79M



Blanks of 79M have been brushed up to be taking advantage of length. You will feel high response speed of blanks and high usability as characteristics of short length model while pursuing long casting performance. Yet it have enough power to cast and manipulate even size 4 Egi (about 25g). It have been loaded moderate repulsive force, flexibility and lightness on blanks. If you are required lure speedy or taking time to lure spooky one out, 79M will be your huge advantage for sure.

Lure: **Egi 2.5~4 (~28g)** Line: **PE 0.5~1**
Length: 2365mm(CL:1210mm) Weight: 89g Price:
Guide: SiC-S stainless frame K guide (Fuji) Section:2pcs (Put over Ferrule)
Reel seat: VSS16(Fuji) Suitable reel size D:2500 / S:C3000



Mebius 86M



It is standard model of Mebius series. Although it is medium class rod, it have gotten sensitive, flexible tip and belly section to be adjusted modern eging scene technically. It have been designed to be well balanced to cast and manipulate Egi with less input by angler reducing burden of angler's wrist. This 86M is the most versatile model of this series. You can cast long distance and manipulate at your will even size 4 Egi (about 30g) without any anxious.

Lure: **Egi 2.5~4 (~30g)** Line: **PE 0.5~1**
Length: 2595mm(CL:1325mm) Weight: 98g Price:
Guide: SiC-S stainless frame K guide (Fuji) Section:2pcs (Put over Ferrule)
Reel seat: VSS16(Fuji) Suitable reel size D:2500 / S:C3000



Mebius 83MH



Although this is the medium heavy model which have been loaded massive power on butt section, blanks of 83MH have lightness and flexibility. It is good for size 3.5~4 of Egi mainly, you can of course use heavy type of size 4.5 of Egi. This 83MH have been designed to be loaded enough power to set hook on huge squid even heavier than 2kg and lightness and flexibility of blanks will reduce unwanted kickback when you jerk.

Lure: **Egi 3~4.5 (~35g)** Line: **PE 0.6~1.2**
Length: 2515mm(CL:1285mm) Weight: 98g Price:
Guide: SiC-S stainless frame K guide (Fuji) Section:2pcs (Put over Ferrule)
Reel seat: VSS16(Fuji) Suitable reel size D:2500 / S:C3000



Eging Series Icons



Small squid for small Egi



Up to 2kg



Over 2kg



Short pitch jerk Quick action



Line slack jerk



For heavy egi



For boat casting

Main is shown in Red Substitute is shown in Blue





Calista

Calista / Eging Model / 6 Line up

We have succeeded to utilize NANOALLOY® technology from TORAY totally as egging rod of new standard. Blanks made of NANOALLOY® will be followed in a moment when it is loaded and will be returned instantly thanks to high repulsive force. Because of these character angler will be able to jerk EGI sharply with less power than ever and make monster squid float quickly without any breakage of legs of squid when you fight. Blanks with moderate stiffness and suppleness will reduce burden of anglers and enable you to lure squid more delicately. Although Calista series have been loaded flexibility and lightness. Also, repulsive force that has been loaded on blanks is much stronger than Mebius series. Even though 3type of M class in this series, those are classified by situations of eging scene and size of squid. All of them bend well even a small amount of input and reshape itself speedy and powerfully. If you aim squid over 3kg mainly, 82M or 86Mare recommended. Other power class will cover small size of squid Up to 2kg. High versatility is hidden inside of blanks with high sensitivity and durability to be enable you to handle variety of lure in weight range on specifications. The potential of versatility loaded on this series will let you aim not only squid but also variety of fish.

TORZITE Fuji NANOALLOY



Calista 86L/TZ NANO

Grip a.305mm b.390mm

Lure: **Egi 2.5~3.5** Line: **PE 0.4~0.8**
Length: 2582mm(CL:1325mm) Weight: 93g Price:
Guide: TORZITE Titanium frame K Guide & Top Guide : SIC Ring Titanium frame Guide(Fuji)
Section:2pcs (Spigot Ferrule) Reel seat: VSS16(Fuji) Suitable reel size D:2500 / S:C3000

Calista 82ML/TZ NANO

Grip a.305mm b.390mm

Lure: **Egi 2.5~3.5** Line: **PE 0.5~1**
Length: 2500mm(CL:1285mm) Weight: 95g Price:
Guide: TORZITE Titanium frame K Guide & Top Guide : SIC Ring Titanium frame Guide(Fuji)
Section:2pcs (Spigot Ferrule) Reel seat: VSS16(Fuji) Suitable reel size D:2500 / S:C3000

Calista 89ML/TZ NANO

Grip a.315mm b.400mm

Lure: **Egi 2.5~3.5** Line: **PE 0.5~1**
Length: 2672mm(CL:1365mm) Weight: 100g Price:
Guide: TORZITE Titanium frame K Guide & Top Guide : SIC Ring Titanium frame Guide(Fuji)
Section:2pcs (Spigot Ferrule) Reel seat: VSS16(Fuji) Suitable reel size D:2500 / S:C3000

Calista 710M/TZ NANO

Grip a.310mm b.395mm

Lure: **Egi 2.5~4** Line: **PE 0.6~1**
Length: 2395mm(CL:1225mm) Weight: 100g Price:
Guide: TORZITE Titanium frame K Guide & Top Guide : SIC Ring Titanium frame Guide(Fuji)
Section:2pcs (Spigot Ferrule) Reel seat: VSS16(Fuji) Suitable reel size D:2500 / S:C3000

Calista 82M/TZ NANO

Grip a.310mm b.395mm

Lure: **Egi 2.5~4** Line: **PE 0.6~1**
Length: 2485mm(CL:1280mm) Weight: 98g Price:
Guide: TORZITE Titanium frame K Guide & Top Guide : SIC Ring Titanium frame Guide(Fuji)
Section:2pcs (Spigot Ferrule) Reel seat: VSS16(Fuji) Suitable reel size D:2500 / S:C3000

Calista 86M/TZ NANO

Grip a.315mm b.400mm

Lure: **Egi 2.5~4** Line: **PE 0.6~1**
Length: 2575mm(CL:1325mm) Weight: 99g Price:
Guide: TORZITE Titanium frame K Guide & Top Guide : SIC Ring Titanium frame Guide(Fuji)
Section:2pcs (Spigot Ferrule) Reel seat: VSS16(Fuji) Suitable reel size D:2500 / S:C3000

