

<http://yamaga-blanks.com/>

YAMAGA Blanks 2017 PRODUCTS

YAMAGA Blanks Made in Japan

Dealer



English Ver.

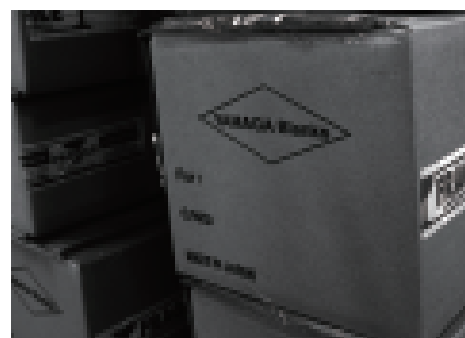
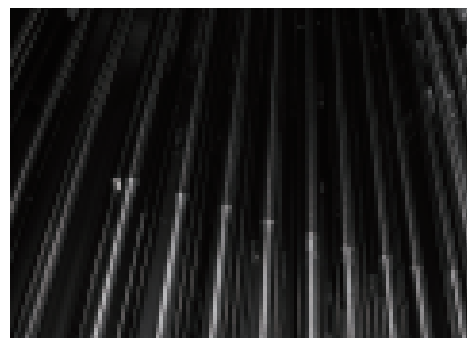
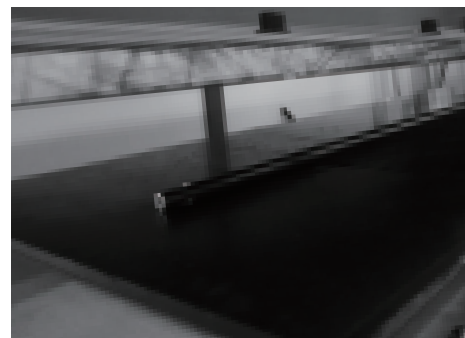


2017 YAMAGA Blanks

- P.02 Concept
- P.04 BlueSniper (Shore Casting)
- P.10 Ballistick (SeaBass)
- P.15 Early Plus (SeaBass)
- P.19 BlueCurrent (Light Game)
- P.26 Calista (Eging)
- P.28 Various (Eging)
- P.29 BattleWhip (Ika-Metal)
- P.32 BlueSniper (Boat Casting)
- P.37 BlueReef (GT)
- P.40 Galahad (Jigging)
- P.46 SeaWalk (Light-Jigging)
- P.52 Lupus (Trout)
- P.54 Estuarine (Predator)
- P.56 Triceptor (3pcs Pack Rod)
 - / BaronKnight (Snakehead)
 - / TAKOKING (Octopus)
 - / Limited Edition (Kids & 4pcs)
- P.58 Goods / Support

Descriptions on this catalog

• Lt=Length CL=Closed Length Wt=Weight Sec=Number of Section Cb=Content rate of Carbon G=Spec of Guides RS=Spec of Reel Seat • SIC=SIC ring guide TZ=TORZITE ring guid
• Suitable reel size and weight that are mentioned on this catalog is based on reel which have been used at proto test. It does not mean that only these reels are useable.



Weave the carbon by machine tool and hands of craftsmen...

Carbon prepreg which is composite of carbonaceous fiber and resin is have to be used by expiration. Each prepreg have got own characteristic and sensitiveness for heat and humidity. Cut prepreg one of each with extreme care, roll it up with mandrel, wrap with heatproof plastic tape and stove it. All these processes are depends on sense of craftsmen hands actually.

Prepreg is known as advanced industrial material and keep making progress day by day as new products are created.

How can we use latest material for fishing rod...

That is why we are testing so many proto to accumulate data of it. Repetition of trial and error gives us choice of designing blanks without any compromises.

Otherwise we will not be able to meet angler's request and diversified.

Also machine tools which are installed in our factory have been tuned, especially to make our blanks unique. Although it is a manufactured product, fishing rods are very influenced by the quality of machine and skills, knowledge and experiences of craftsmen who operate these tools.

Even though when two different chefs have been given same ingredients of food, those dishes will be totally different of course. As same as this example, machine tools, all of crew and history of our own factory will make our products unique as YAMAGA Blanks. These are things that kept us manufacturing fishing rods.

We believe that there is no goal for fishing rod building, rather it is some circumstances of nature and method of fishing.

We promise that we never ever stop pursuing what anglers are requiring for fishing rod and we are going to form it without compromise.

Shore Casting

Jigging & Plugging



What is Nanoally

This is a new technology developed by Toray with the use of macromolecular material for better technical advantages and high functionality in the material. The carbon blank which have been developed with the use of these carbon prepreg material with the new Nanoalloy technology have excellent properties. However, please keep in mind that the explanation below is limited to the rods we produce and may not apply to other rods build elsewhere with different techniques.

Characteristics

One attribute of the new material which is noteworthy is its "hardness and bending ability". It is also "highly sensitive". Being hard and having the ability to bend are two contradictory characteristics in a rod. To put it into perspective, only a small load on the rod will be enough to bend the blank yet its "repulsive force" is extremely strong. "Repulsive force" is its inherent ability to reshape itself to its original position.

This strong repulsive force will also allow anglers to continuously apply pressure on the fish giving you better chance of surfacing the fish more efficiently.

With its ability to bend with the least amount of load means that it is able to bend easily with the use of small lures when casting, resulting in casting being more easy for the angler.

However, with its added repulsive force compared to the usual carbon blank, the release point will change and some getting used to will be required.

The other attribute of this material is "sensitivity".

The denser consistency of the fiber of the blank accelerates the calming of the wobble after the cast which also results in greater sensitivity. This sensitivity will help the angler fight the massive fish by transmitting vital information of the movement of the fish through the blank. With these synergistic effects of the sensitivity and high repulsive force, we are positive this new material will help you achieve your dream fish.

Can this material excel the capabilities of any rod?

If it's so great, why don't we employ this Nanoalloy material for all rods?

Well, it is not so simple.

For example, in the light game fishing targeting small to middle size horse mackerel, it is sometimes better matched to use the ordinary carbon material compared to the Nanoalloy.

This is meant that if we develop and test the rod carelessly, it will put too much pressure and load that the human body to handle because of its strong repulsive force. We are already realized that this new material is great when applied correctly, so we will never stop looking for a technique to bring out the potential of it.

2017 REBORN BLUESNIPEr

Extreme Shore-Casting Strategy

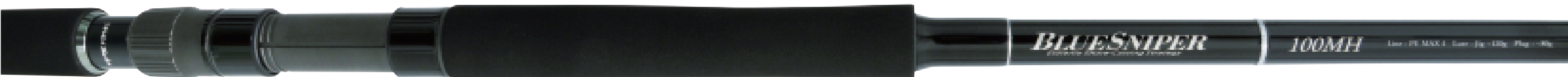
BlueSniper / 6 Line Up / For Shore Casting

It's already 8 years has passed since one of YB's masterpieces was released. Finally In 2017, BlueSniper Shore Casting series is totally renewed. We have chosen Nanoalloy technology from TORAY to form a new design of concept.

You will be surprised on the lightness and sharpness when you cast or manipulates lure at high sensitivity loaded blank, it will keep your fish under control. Tough and strong butt section will pull your fish up to surface quicker than ever. The plugs for blue runner are segmentalized and circumstances of shore jigging scene are changing day by day. for example the minnows and the sinking plugs are coming to forefront these days. To adjust changing situation of shorejigging, we have fused sensitive and flexible tip to a devastating power of butt section with knowledge and experiences that we have earned until now.

What the anglers needs under such ultimate environment...

Our field tests was repeatedly over and over again, then we have finally reached to this answer.





2017 New model

BlueSniper ShoreCasting

2017 New

BlueSniper 96ML

New face of BlueSnper Shore casting series that is categorized as [ML] class. This is light shore jigging rod to aim small sized of yellowtail, amberjack and spanish mackerel. This would be suited for jigs around 40g, minnow around 10cm~14cm from break water or surf. Especially it will be the best match for surf game to aim giant flatfish. You can handle it like a seabass rod but huge butt power is hidden in the blank itself, to keep even mid-sized Blue Runner under control. You can manipulate not only metal jig or minnow, but also sinking pencil bait or vibration to have an advantage on situations you are faced out there. Of course, you can cast metal jig 60g with full power and control it at your own will perfectly.

2017 New

BlueSniper 100M

This is the mid power model, which have been loaded with toughness and lightness to aim blue runner around 3kg from pier or surf. You can take advantage of its length to aim fish that feeding in the distance with high accuracy. If you are going to fish at the field where current flows are rapidly and caught tide by fish, you can still keep it under control with this 100M, even you are in a severe situation, you will be able to have an advantage fighting with the monster fish. This would be recommended to not only experts but also beginner and female anglers.

2017 New

BlueSniper 97MMH

BlueSniper 97MMH is well tuned with flexible tip and powerful butt. You will notice instantly that it is much lighter than 100MH when you just hold it. Its enable you to manipulate lure at your own will without failure thanks to its nice and flexible tip section and you can fight against to large Blue Runner even over 5kg without been anxious because of its tough and tenacity butt section. However it is not just stiff rod. Even though you can cast and manipulate heavy jig or plug, its enable you to use even small and light lure at your own will and you can twitch diving pencil lure delicately. If you want to achieve one of the few occasions, this 97MMH is going to be reliable buddy when you faced difficult situation for sure.

2017 New

BlueSniper 100MH

This is the standard of New BlueSniper to aim Blue Runner around 4~5kg. This have been well balanced as all round model to cast and manipulate jig or plug at higher level. The potential that is hidden inside of this blank will be exercised, especially when you fish under the situation that hardly focus the pattern of bait. If you fish with jig around 80~100g, plug around 60g we recommend you to choose this 100MH. Breathtaking butt power enables you to jerk jig as you wish and to pull the monster fish up from bottom of the sea and it have been fused perfectly to tip section, which have ability to manipulate lure sensitively and aggressively. You will never lose control thanks to its higher sensitiveness of this blank itself.

2017 New

BlueSniper 106H PlugSpecial

This is the specialized model to manipulate plugs without any failure and even selective fish can't help resisting to bite it. It has gotten almost the same power as 910H on butt section and you will sense that it have a lot in common with previous model on its tip and belly section when you just hold it. But once you cast and fish with it actually, you will notice how much it have been advanced than previous model.Of course, it has enough power left to fight Blue Runner around 4~5kg, you can keep big fish even around 10kg under control at your own will. You can cast even bigger diving pencil bait sized around 200mm without any stress and selective fish can't help resisting to take a bite because of various action of lure that you have made. Even when you try to aim Blue Runner that over 10kg from rough field as such as rocky shore or else, this 106H PS is going to be a huge advantage, thanks to sensitiveness and lifting power which is attributable to Nano alloy technology from TORAY. Of course, you can also cast and manipulate jig up to 130g.

2017 New

BlueSniper 910H

This is perfectly tuned to manipulate jig as you wish thanks to section from butt to tip with moderate intension. You can cast heavy jig around 150g easily and semi-flexible tip section will reduce burden of angler when you have keep jerking heavy jig all day long. It is possible to manage that which makes fish take jig technically on limited range even when you fish at field where are required skills and techniques such as deep, rough and current runs rapidly. You will able to land even yellow fin tuna from shore, thanks to that potentials hidden inside of blanks. It is exactly like a muscle of athlete to reach the very top.

We have loaded know-how of blanks with NANO Alloy® that we have acquired to New BlueSniper. We had made use of technology of NANO Alloy® from TORAY to achieve sharpness, lightness and speed response.

In consideration of durability, we have chosen double foot and ocean guide of SiC Stainless Frame K guide depends on the model.

End grip of 96ML and 100M are made of EVA. Rest of these are loaded BRC.We have tried to make handle as simple as possible.

DPS reel seat from Fuji Corporation have been loaded. We chose long nut to be tighten up easily even by hands with gloves.

EVA handle is shaped nicely to be tighten its grip easily.

2017 New

BlueSniper 96ML

Lt: **2935mm (CL:1500mm)** Wt: **223g** Lure: **Jig~60g/Plug~40g** Line: **Max Pe2** DragMax: **3kg /45°** Price:

Target: **Small sized Blue-runner · Flatfish** / Lure: **Plug · Metal jig** / Field: **Piers · Rocks · Surf**



2017 New

BlueSniper 100M

Lt: **3070mm (CL:1570mm)** Wt: **245g** Lure: **Jig~80g/Plug~50g** Line: **Max Pe3** DragMax: **4.5kg /45°** Price:

Target : **BlueRunner** / Lure: **Plug · Metal jig** / Field: **Piers · Rocks**



2017 New

BlueSniper 97MMH

Lt: **2950mm (CL:1515mm)** Wt: **296g** Lure: **Jig~100g/Plug~60g** Line: **Max Pe4** DragMax: **6kg /45°** Price:

Target : **BlueRunner** / Lure: **Metal jig · Plug** / Field: **Piers · Rocks**

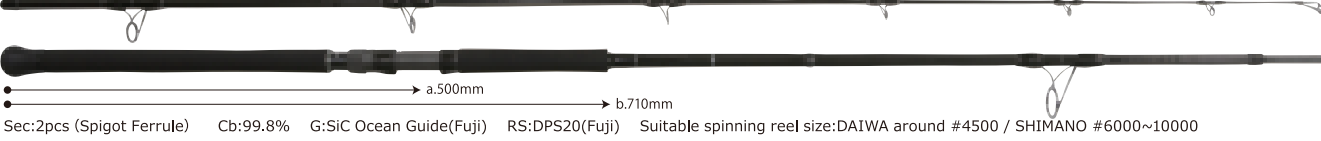


2017 New

BlueSniper 100MH

Lt: **3070mm (CL:1575mm)** Wt: **307g** Lure: **Jig~120g/Plug~80g** Line: **Max Pe4** DragMax: **6kg /45°** Price:

Target : **BlueRunner** / Lure: **Metal jig · Plug** / Field: **Piers · Rocks**

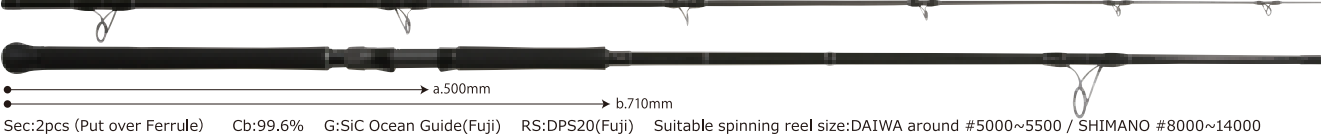


2017 New

BlueSniper 106H PlugSpecial

Lt: **3215mm (CL:1650mm)** Wt: **325g** Lure: **Jig~130g/Plug~100g** Line: **Max Pe5** DragMax: **8kg /45°** Price:

Target : **BlueRunner** / Lure: **Plug · Metal jig** / Field: **Rocks**

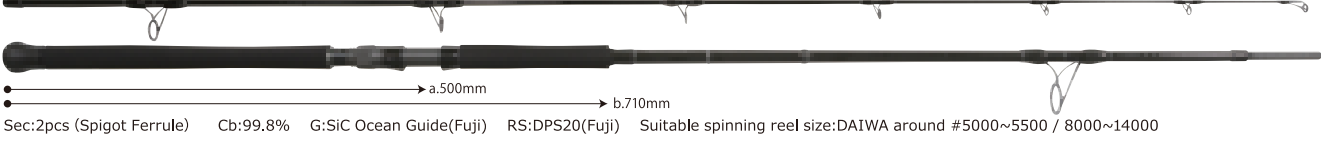


2017 New

BlueSniper 910H

Lt: **3030mm (CL:1550mm)** Wt: **326g** Lure: **Jig~150g/Plug~120g** Line: **Max Pe5** DragMax: **8kg /45°** Price:

Target : **BlueRunner** / Lure: **Metal jig · Plug** / Field: **Rocks**



※Size of rod a.Length from reel foot to end of grip when reel is equipped. b.Whole length of grip.



This is the image that yellowtail around 4kg is on BlueSniper100MH. 100MH have enough power to keep it under control and land smoothly.



100M is designed to be bent well to reduce physical burden of anglers when they cast and fight. It suits anglers who fish delicately with plugs mainly.

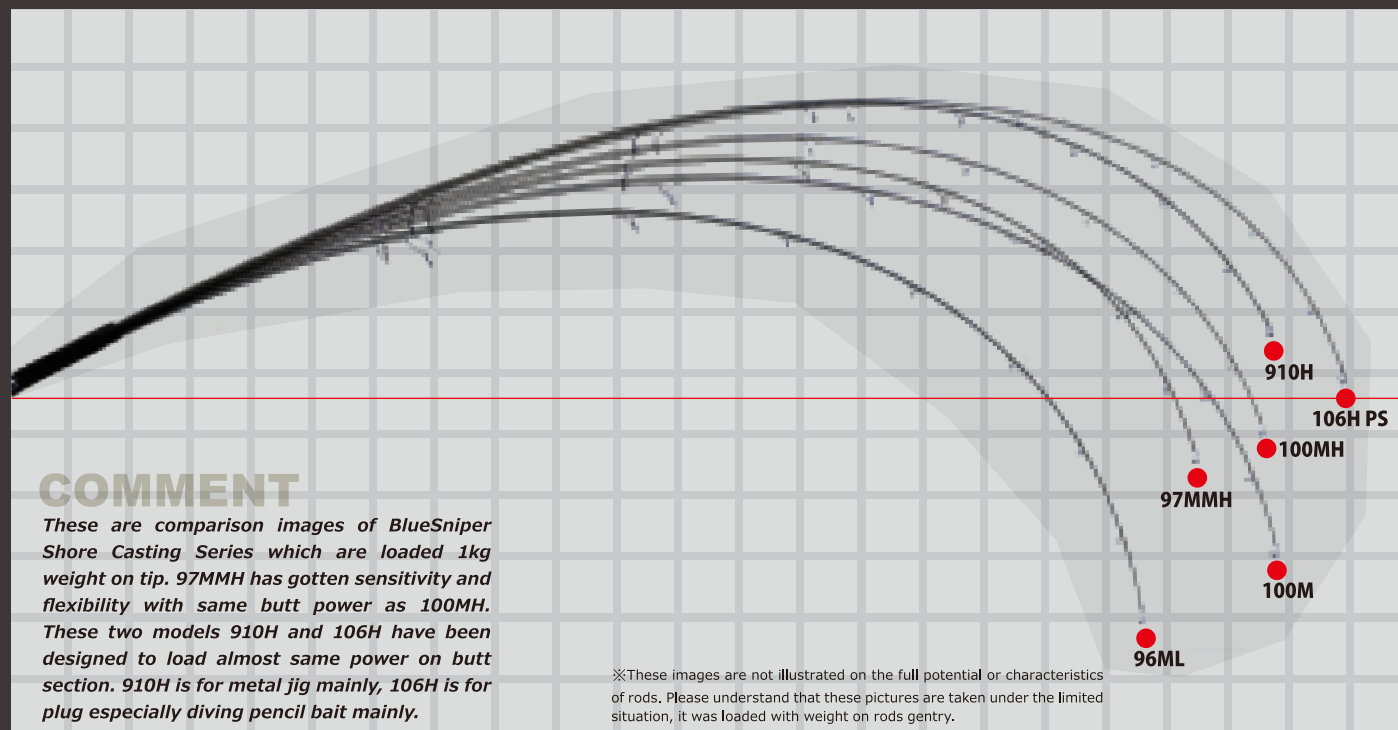


97MMH is the model with high versatility. It is recommended to anglers who aim Blue Runner around 5kg with both jig and plug.



100MH have enough power to aim Blue Runner around 5~10kg with both jig and plugs. If you aim Blue Runner over 10kg with jig, Please choose 910H, with plug please choose 106H.

New BlueSniper Bending Curve Load 1kg



Seabass
and more



Ballistick

Ballistick / 16 Line Up / Seabass・Black-fin Seabass・Flatfish・Black bream

Ballistick series are flagship models for Seabass game from YAMAGA Blanks to adjust the various situation and we have succeeded to achieve all factors that are required to make it excellent seabass rod without any compromise.

7 Spinning models, 6 overhead models and 3 models for Black-fin seabass that all have gotten high versatility to enable anglers to aim not only seabass but also Flat fish kind or Black sea bream. Nano Alloy® from TORAY have been loaded to blank itself (except overhead models 73ML and 710XH) to get high cast ability and high sensitiveness to keep fish under control. Thanks to blanks that have got high convergence speed, you can cast long distance and you will hardly fail to hook fish up at first bite. We have pursued to make Ballistick series as an excellent tool. We believe that you will definitely sense the potential of Ballistick once you fish with it.

Ballistick Spinning-Model

Ballistick 86L TZ/NANO

This is the light class rod which is enable you to manipulate lures from small sized minnow such as 7cm to vibration weight 15g. 86L is ideal for situations when the baitfish is very tiny at not only port but also rivers or estuary. Although 86L is light class seabass rod, you will be able to keep huge one under control thanks to blanks with NANOALLOY® technology.

Ballistick 73ML TZ/NANO

Ability of accuracy which have been hidden inside of blanks of 73ML is outstanding. If you have to cast small sized lure to pin spot with fine line, it will bring you satisfactory result for sure. We have designed to make it 2pcs to achieve high portability. It has been loaded enough power to catch large seabass, so it will suit to aim Black Sea Bream with lure for top water that is required sharpness to set hook on.

Ballistick 92ML TZ/NANO

If you are required to twitch or jerk minnow delicately, we recommend you to choose this 92ML which have been loaded sensitive tip section. Also it was designed to be well balanced and high responded model with sensitiveness. You will be able to take this for seabass fishing does not matter day game or night game to lure the big one with this strength and sensitiveness.

Ballistick 86M TZ/NANO

This is the medium class rod which have been loaded versatility to use lure from minnow sized 9~14cm to heavy vibration without any stress when you are wading. If you do not want to lose initiative when you have hooked huge seabass up while you are wading in the river, it will work for you because of powerful butt section with NANOALLOY® technology.

Ballistick 94M TZ/NANO

This is the multi-purpose seabass rod to cover various situation with minnow, sinking pencil or vibration lures. You will be able to sense changes of current or tiny contact of seabass thanks to sharpness and sensitiveness of blanks itself. Of course it has been gotten enough power to land fish at your own will. You don't have to be afraid to aim huge seabass at field there is lots of structures under water thanks to potential of power that is hidden inside of blanks. We believe that 94M have been well balanced to be called "basic one" because of sensitiveness, handleability and toughness of blanks.

Ballistick 96MMH TZ/NANO

If you wish to cast heavy lure as such as minnow size around 14cm, metal jig, sinking pencil or heavy vibration further, we recommend you to choose 96MMH. We promise that you will be able to cast heavy lure a great distance on surf or rocks even in headwind. 96MMH will help you to maintain your concentration because you will hardly get tired thanks to lightness and handleability of it.

Ballistick 102MH TZ/NANO

When you aim huge seabass on surf or rocks, 102MH will be your reliable partner for sure. It is powerful enough to aim huge Seabass over meter or even Black-Fin Seabass and small sized Blue-Runner on rocks. We recommend you to take 102MH if you are going to aim large flatfish on surf thanks to potential of power, sharpness, and ability of casting.

Ballistick 86L TZ/NANO

TORZITE **NANOALLOY** TECHNOLOGY

Lt: **2605mm (CL:1330mm)** Wt: **102g** Lure: **4~21g** Line: **Pe0.6~1.2** Price:
Target : Seabass・Black Sea Bream / Lure : Small Sized Minnow ~9cm・Vibrations・Small Sized Metal jigs etc Field : Middle~Lower of rivers・Port



Ballistick 73ML TZ/NANO

TORZITE **NANOALLOY** TECHNOLOGY

Lt: **2220mm (CL:1135mm)** Wt: **95g** Lure: **5~24g** Line: **Pe0.6~1.2** Price:
Target : Seabass・Black Sea Bream / Lure : Plug・Jig head rig / Field : Small sized rivers・Port



Ballistick 92ML TZ/NANO

TORZITE **NANOALLOY** TECHNOLOGY

Lt: **2790mm (CL:1425mm)** Wt: **120g** Lure: **5~24g** Line: **Pe0.6~1.2** Price:
Target : Seabass / Lure : Plug / Field : Estuary・Port



Ballistick 86M TZ/NANO

TORZITE **NANOALLOY** TECHNOLOGY

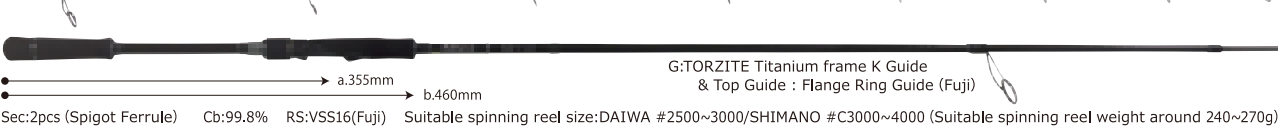
Lt: **2605mm (CL:1330mm)** Wt: **122g** Lure: **6~32g** Line: **Pe0.8~1.5** Price:
Target : Seabass / Lure : Minnow 9~14cm・Vibrations・Sinking pencil / Field : Rivers・Mudflats



Ballistick 94M TZ/NANO

TORZITE **NANOALLOY** TECHNOLOGY

Lt: **2850mm (CL:1455mm)** Wt: **143g** Lure: **6~35g** Line: **Pe0.8~1.5** Price:
Target : Seabass・Flatfish / Lure : Plug・Vibrations / Field : Rivers(lower to mouth)・Port・Surf・Mudflats



Ballistick 96MMH TZ/NANO

TORZITE **NANOALLOY** TECHNOLOGY

Lt: **2910mm (CL:1485mm)** Wt: **151g** Lure: **8~38g** Line: **Pe1~2** Price:
Target : Seabass・Flatfish / Lure : Plug・Vibrations・Metal jig / Field : Surf・Rocks・Estuary



Ballistick 102MH TZ/NANO

TORZITE **NANOALLOY** TECHNOLOGY

Lt: **3110mm (CL:1590mm)** Wt: **177g** Lure: **8~42g** Line: **Pe1~2** Price:
Target : Seabass・Big sized Flatfish / Lure : Plug・Vibrations・Metal jig/ Field : Surf・Rocks・Estuary of large river



※Size of rod a.Length from reel foot to end of grip when reel is equipped. b.whole length of grip





Ballistick Overhead-Model

2017 New Ballistick 810ML/NANO RIVER CUSTOM (Overhead reel model)

This is special tuned model to pursue accuracy of cast when you fish at upper or mid of the river. Moderate Modulus of these blanks will help anglers to cast lure with minimum motion and deliver it to underneath over hung at your own will with higher accuracy. You can cast a distance easily, thanks to characteristic of blanks with NanoAlloy®. It is well designed to let anglers manipulate lure in a current river without any stress, and well balanced power which is accumulated inside of the blank will help anglers to pull the big one out from even rapid current. This must be the perfect rod for keen angler who knows where the monster seabass sitting assuredly. We believe that it is going to be a huge advantage for the angler who fish on the river mainly to catch the memorial fish for sure.

2017 New Ballistick 103MH/NANO (Overhead reel model)

This is over head model with massive power to fish from rocky shore. We have loaded enough power, cast ability and sensitiveness to blanks of these to aim black fin seabass in tough situation for example you are required to cast against head wind, on the fight at rocky beach or else. You will be surprised that accuracy cast, quickness to make first action, power of lifting and dexterity performance of this 103H/NANO is as a versatile overhead tackle. Of course, this is recommended to anglers who are aiming at giant flat fish from surf while using jig, vibration or plastic worm effectively. Although it has gotten so incredible power on blanks, you can develop some strategy of the game sensitively and delicately as same as spinning tackle while fishing with heavier line.

Ballistick 73ML WILD CARD (Overhead reel model)

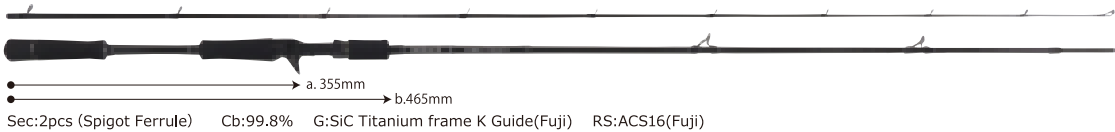
We have designed 73ML to become medium light action to enable anglers to manipulate light weight lures for seabass game from boat. It will be a reliable tool for not only seabass game from boat but also for the game that is required high accuracy performance to cast at small sized river or port area or various method of Black sea bream fishing.

Ballistick 85M/NANO (Overhead reel model)

This is the basic model for seabass game on rivers and port. You will be able to manipulate vibrations or sinking pencil which effects the lures when it is falling in the water at your own will and also accuracy cast around structures with this 85M. And it has been loaded with sharpness feelings when you manipulate lure and incredible power on butt section thanks to NANOALLOY® technology from TORAY.

2017 New Ballistick 810ML RIVER CUSTOM NANO (Overhead reel model)

Lt: **2695mm (CL:1375mm)** Wt: **134g** Lure: **7~32g** Line: **Pe0.8~1.5** Price:
Target : Seabass / Lure : Plug / Field : Rivers (Especially the flow velocity field in the upper - middle region)



2017 New Ballistick 103MH NANO (Overhead reel model)

Lt: **3135mm (CL:1600mm)** Wt: **191g** Lure: **10~45g** Line: **Pe1.5~2.5** Price:
Target : Seabass (Including black-fin seabass) · Small sized Blue-runner / Lure : Plug · Metal jig / Field : Rocks · Surf



Ballistick 93M/NANO (Overhead reel model)

This is the long distance shooter which will cover seabass game with plugs at river mouth or port and also light jigging game from surf. Blanks of 93M have been designed to let anglers manipulate and cast many kind of lures such as vibration, sinking pencil, metal jig, and large sized minnow without any stress.

Ballistick 710XH BIG BAIT (Overhead reel model)

This is the special model to cast and manipulate Big Bait lures included lures for large mouth bass. You will be able to cast and manipulate Big Bait at your own will with this 710XH. We recommend this 710XH for anglers who are going to aim at seabass which is staying in rapid current or pin spot around structures as well as looking for large sized bait fish such as shad or sweet fish that is going down stream to spawn.

Ballistick HIRA For Black fin seabass

Ballistick HIRA 107MH TZ/NANO

This is one of the perfect rod for Black-Fin Seabass to cover various situation and field to aim it. You will be able to cast and manipulate, not only minnow Black-Fin Seabass but also any kind of lures as such as small sized sinking pencil, vibration or jig head even in headwind. Although this is the finest rod in HIRA series, it has loaded enough power to fight against large sized Black-Fin Seabass or Blue Runner over 80cm.

Ballistick HIRA 11MH TZ/NANO

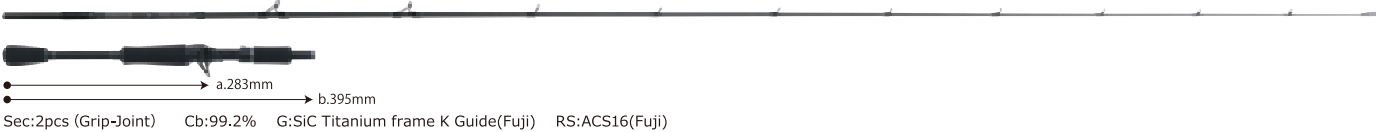
Although this 11MH have been designed for Black-Fin Seabass, it is tough enough to keep Blue Runner up to 5kg under control. Of course, you will be able to manipulate plug delicately and once you hooked even huge one at tough field, you will never lose initiative for sure. If you are an angler who fish in tough situations and wish to land fish smoothly without any stress, we recommend you to take 11MH which will be huge advantage for you.

Ballistick HIRA 11H TZ/NANO

This is the mighty rod for Black-Fin Seabass. Although it is powerful enough to catch Black-Fin Seabass over 10kg, you will sense how light and sharp it is when you actually fish. You don't have to worry about hooking Blue Runner up suddenly when you are trying to aim Black Fin Seabass because of ultimate power hidden in blanks of 11 H. But it is not just tough rod. Once you hold it and cast, manipulate heavy lure in headwind, we believe that you will notice that it has been loaded sharpness and sensitiveness on blanks to make expert or even beginner anglers satisfy.

Ballistick 73ML WILD CARD (Overhead reel model)

Lt: **2230mm (CL:1874mm)** Wt: **108g** Lure: **5~28g** Line: **Pe0.8~1.5** Price:
Target : Seabass · Black Sea Bream / Lure : Plug · Rigs · Metal jig / Field : Boat · Rivers · Port



Ballistick 85M NANO (Overhead reel model)

Lt: **2560mm (CL:1314mm)** Wt: **136g** Lure: **8~42g** Line: **Pe1~2** Price:
Target : Seabass / Lure : Plug · Metal jig / Field : Rivers · Port



Ballistick 93M NANO (Overhead reel model)

Lt: **2830mm (CL:1445mm)** Wt: **159g** Lure: **8~42g** Line: **Pe1~2** Price:
Target : Seabass · Flatfish / Lure : Plug · Metal jig / Field : Estuary · Surf · Mudflats · Rocks



Ballistick 710XH BIG BAIT (Overhead reel model)

Lt: **2385mm (CL:1950mm)** Wt: **210g** Lure: **Max 120g** Line: **Max Pe3** Price:
Target : Seabass / Lure : Plug(Big bait) / Field : Rivers · Port



Ballistick HIRA 107MH TZ/NANO

Lt: **3230mm (CL:1650mm)** Wt: **198g** Lure: **7~45g** Line: **Max Pe2** Price:
Target : Black fin seabass · BlueRunner / Lure : Plug · Vibrations · Metal jig / Field : Rocks



Ballistick HIRA 11MH TZ/NANO

Lt: **3360mm (CL:1720mm)** Wt: **228g** Lure: **8~50g** Line: **Max Pe2.5** Price:
Target : Black fin seabass · BlueRunner / Lure : Plug · Vibrations · Metal jig / Field : Rockes · Isolated island



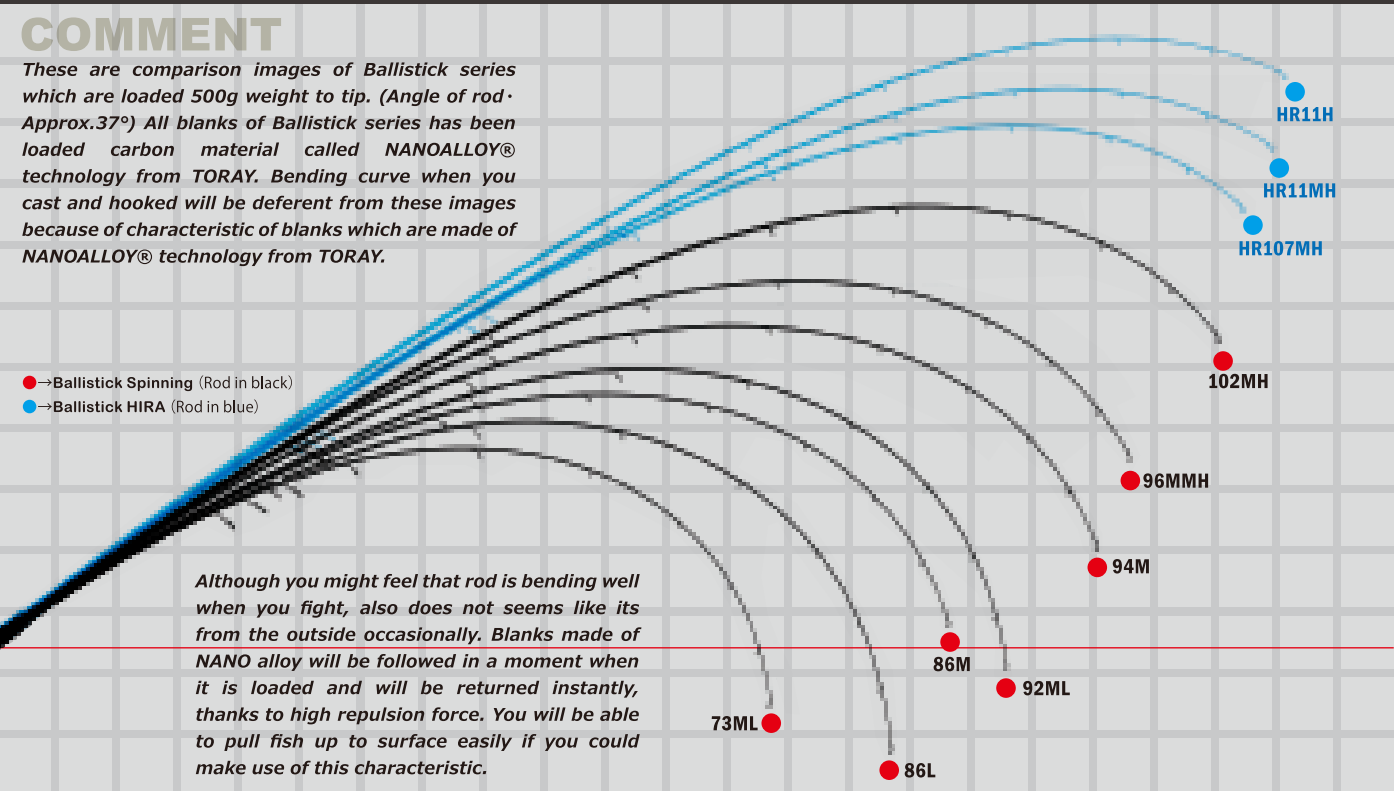
Ballistick HIRA 11H TZ/NANO

Lt: **3360mm (CL:1720mm)** Wt: **241g** Lure: **10~60g** Line: **Max Pe3** Price:
Target : Black fin seabass · BlueRunner / Lure : Plug · Vibrations · Metal jig / Field : Rocks · Isolated island

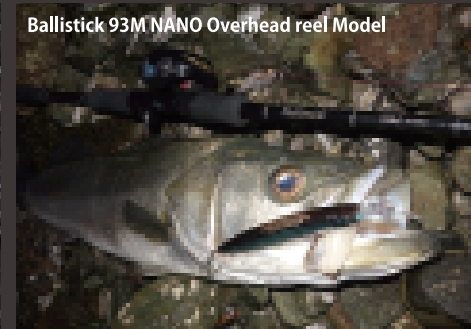
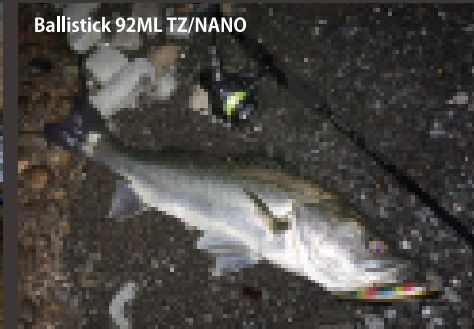
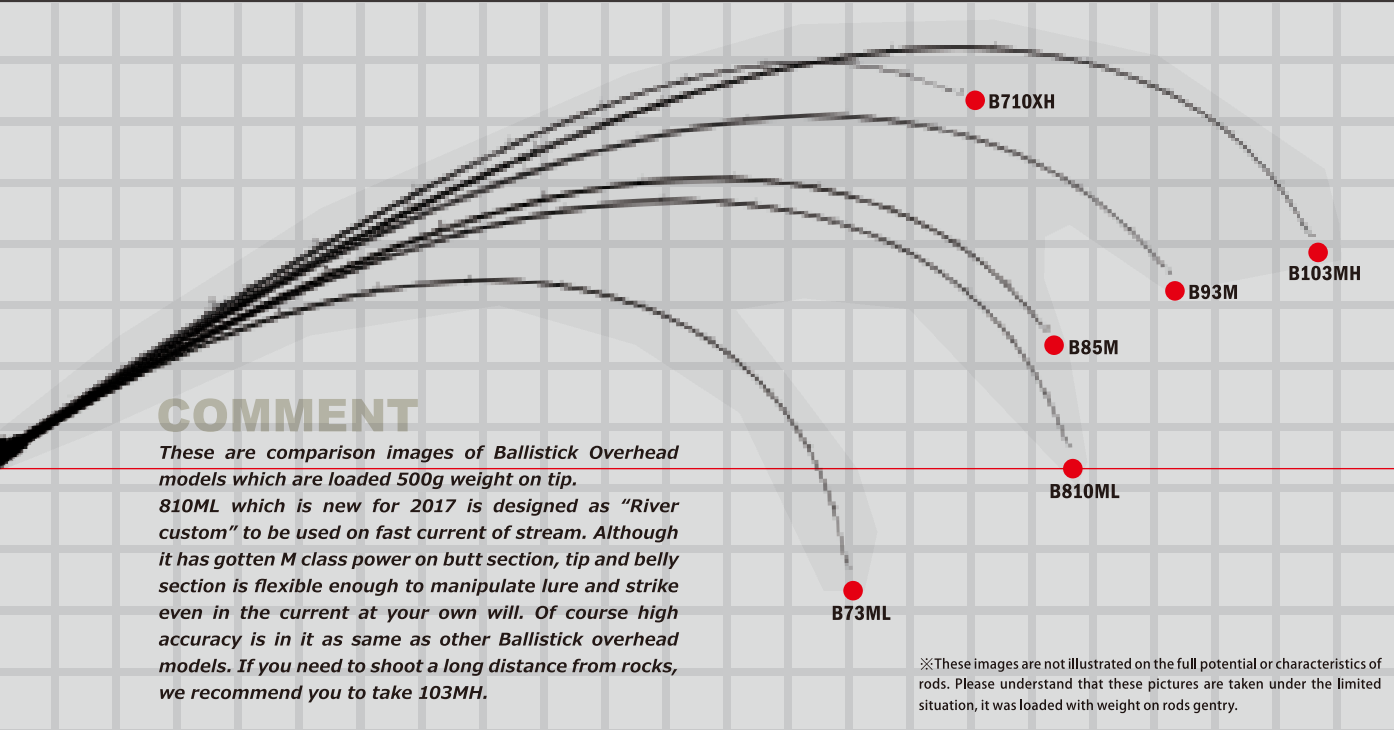


Sizes of rod a. Length from reel foot to end of grip. (From trigger to end of grip in the case of overhead model) b. Whole length of grip. (It will be 10mm longer when down lock on front was closed in the case of overhead model)

Ballistick Spinning-Model Bending Curve Load 500g



Ballistick Bait-Model Bending Curve Load 500g



EARLY Plus

EARLY Plus / 11 Line Up / For Seabass & Flatfish...etc

EARLY Plus 710XF

This is the Extra finesse rod which has been loaded not only with high accuracy performance to cast pin point at the port where the Mooring lines, boats are being jumbled together, but also with tough butt section to pull out the sea bass aggressively. You will be able to fight against young sea bass, of course even medium sized sea bass with this rod. It has been also got versatility to enable you to use it for Black sea bream fishing on the surface or wind fishing of hair tail.

EARLY Plus 89L

This is one of the best for sensitive game on the field like shallow areas of rivers or wading game in mudflats. We have designed these blanks to twitch or jerk the minnow around 9cm or vibrations around 15g easily.

EARLY Plus for Seabass game which have been highly regarded since it have been released because of that cost performance as fishing rod that is proudly made in japan without any compromises. Every single Blank which is produced by YAMAGA Blanks is designed to pursue the lightness, the ability of casting and toughness as a reliable tool for fishing. The characteristic of EARLY Plus is blanks which has been loaded sharpness and tenacious butt section with toughness. Once large seabass is on, rod will be bent and power of lifting will increase when it is bent more and more. Also, 81M, 86M, and 96M which has been added in 2016. These models are enable anglers to cast heavy lure long distance and manipulate it at their own will with nice and comfortable feeling. Furthermore these 3 models has been finished as a family of EARLY Plus series to cover various situation and field of fishing such as port, surf, rivers or estuary.

EARLY Plus 710XF

Lt: 2400mm (CL:1235mm) Wt: 118g Lure: 2~18g Line: Pe0.4~1.2 Price:
Target: Seabass・Black Sea Bream・Hair-tail etc / Lure: Minnow 7~9cm・Small Sized Vibrations・Small plug・Wind lures / Field: Port・Estuary

Sec: 2pcs (Put over Ferrule) Cb: 96.3% G: SIC Stainless frame K Guide (Fuji) RS: VSS16/BACK STOP Double Nut (Fuji) Suitable reel size: DAIWA around #2500 / SHIMANO around #2500 (C3000)

EARLY Plus 89L

Lt: 2665mm (CL:1360mm) Wt: 125g Lure: 5~21g Line: Pe0.6~1.2 Price:
Target: Seabass / Lure: Minnow around 9cm・Midium Sized Vibration・Small jigs / Field: Port・Estuary

Sec: 2pcs (Put over Ferrule) Cb: 95.9% G: SIC Stainless frame K Guide (Fuji) RS: VSS16/BACK STOP Double Nut (Fuji) Suitable reel size: DAIWA around #2500 / SHIMANO around #2500~#3000

※Size of rod a.Length from reel foot to end of grip when reel is equipped. b.Whole length of grip.



EARLY Plus 88ML

It to be the core of this series. Early+ 88ML has been designed to manipulate minnow around 12cm mainly, or various lures like vibrations, sinking pencil etc… This is comfortable length to fish at mudflats or wading fishing in the river mouth.

EARLY Plus 95ML

Early+ 95ML is the best model to explore the huge area like mudflats, river mouth or surf. To search the pin spot of changes of landscape or explore the sea current widely, this is the perfect rod for search game in an open area. Although this is ML class rod, it has been loaded with enough power on the butt section to make large size class sea bass under control, which means, it is strong enough to fight a big fish from rocks or surf.

EARLY Plus 92XML

This model is which has been combined with sensitiveness and high resilience tip with persistence and tough butt section. This has been loaded with more power than 95ML in order to aim the large size sea bass at the field where the current is running rapidly like large river, river mouth or straits. The large sea bass sized 93cm and many other big ones has been caught with this 92XML. This could be called a ranker hunter.

EARLY Plus 81M

This has been tuned as special model for wind fishing. We believe that it will be good to fish for not only seabass but also Hair-tail from shore. We have designed this well balanced model to keep jig head under control and jerking with a steady rhythm. Even if the contact of Hair-tail was too small to sense it, tip and belly section which have gotten flexibility and high sensitivity will let hook set on the mouth of it.

EARLY Plus 86M

This is the one that enable angler to manipulate vibration without any stress and to feel good response when you are jerking minnow hard. We have designed this model to manipulate lures which you can sense the feeling of resistance of water when you retrieve it without any stress. Of course it have been loaded high sensitivity to sense the feeling of small contact while you are manipulating lure. You will be able to notice that you will have less problem when it is hooked up itself, lands fish smoothly with it even when you are wading. We propose this model to seabass fisher who is searching big fish in all of range of the waters.



EARLY Plus 96M

This has been specially designed for an extensive surf or estuary, as you will notice from its name. This is mainly for flatfish and it have been loaded enough power and speed on blanks to cast heavy lures such as metal vibration or heavy jig head in against wind. We think that you will be able to feel it hes not only enough toughness on butt section to keep fish under control even in backwash but also enough flexibility on berry section to set hook on the mouth of flatfish smoothly. And you will be able to do light jigging from shore using metal jig which is up to 35g with it.

EARLY Plus 100M

Early+ 100M is the best to be used at the field where long distance casting is required like rocks, dikes, surf or large rivers. Although it has gotten enough power on the blanks to cast minnow over 14cm or like heavy vibration, it has also got high level of sensitivity.

EARLY Plus 102MH

This is a long length rod for not only large sized sea bass but also for black fin sea bass or small sized blue runner. 102MH has been designed for the game where you may require to cast large plugs long distance or light shore jigging game that you can manipulate jigs around 50g rhythmically. This is the powerful model with tough butt section which will enable anglers to stop the large sizes on the last-ditch effort.

EARLY Plus 98H

Early+ 98H will be able to cover the situations where you use big bait, metal jig or large lures like top plug for bluerunner. This is the most powerful model of Early+ series that enables anglers to pull out large sized sea bass from wave dissipating block, to fight against Blue runner around 5kg. Although it has gotten the power like once you fish with it you will feel the lightness and sharpness of it. Also it suits anglers who aim at catching salmon or red eye.

EARLY Plus 88ML

Lt: **2630mm (CL:1340mm)** Wt: **140g** Lure: **7~28g** Line: **Pe0.8~1.5** Price:
Target : Seabass / Lure : Minnow around 12cm・Vibrations・Sinking pencil / Field : Mudflat・Estuary



EARLY Plus 95ML

Lt: **2855mm (CL:1465mm)** Wt: **147g** Lure: **7~28g** Line: **Pe0.8~1.5** Price:
Target : Seabass・Flatfish / Lure : Minnow around 12cm・Vibrations・Sinking pencil / Field : ・Mudflat・Estuary・Surf・Rocks



EARLY Plus 92XML

Lt: **2780mm (CL:1425mm)** Wt: **147g** Lure: **7~32g** Line: **Pe0.8~2** Price:
Target : Seabass / Lure : Minnow 12cm・Vibrations・Sinking pencil / Field : Straits・Rocks・Estuary・Rivers・Surf



EARLY Plus 81M

Lt: **2475mm (CL:1275mm)** Wt: **130g** Lure: **6~32g** Line: **Pe0.8~1.5** Price:
Target : Seabass・Hair-tail / Lure : Wind Lures / Field : Port・Estuary



EARLY Plus 86M

Lt: **2580mm (CL:1325mm)** Wt: **142g** Lure: **6~32g** Line: **Pe0.8~1.5** Price:
Target : Seabass・Flatfish・Hair-tail / Field : Port・Rivers / Lure : All kind of Vibrations・All kind of Minnow



EARLY Plus 96M

Lt: **2895mm (CL:1485mm)** Wt: **170g** Lure: **7~35g** Line: **Pe0.8~2** Price:
Target : Flatfish・Seabass・Small sized Blue-Runner / Field : Surf / Lure : All kind of Vibrations・All kind of Minnow・Heavy Jig Head・Metal Jig



EARLY Plus 100M

Lt: **3055mm (CL:1570mm)** Wt: **187g** Lure: **10~35g** Line: **Pe1~2.5** Price:
Target : Seabass・Flatfish / Lure : Minnow around 12~14cm・Vibrations・Sinking pencil・Metal Jig / Field : Rocks・Estuary・Surf・Dikes etc



EARLY Plus 102MH

Lt: **3100mm (CL:1585mm)** Wt: **213g** Lure: **12~50g** Line: **Pe1.2~3** Price:
Target : Seabass・Black Fin Seabass・Blue-Runner (around 1~3kg) / Lure : Minnow over 14cm・Plugs for Blue-Runner・Metal Jig / Field : Rocks・Surf・Dikes etc



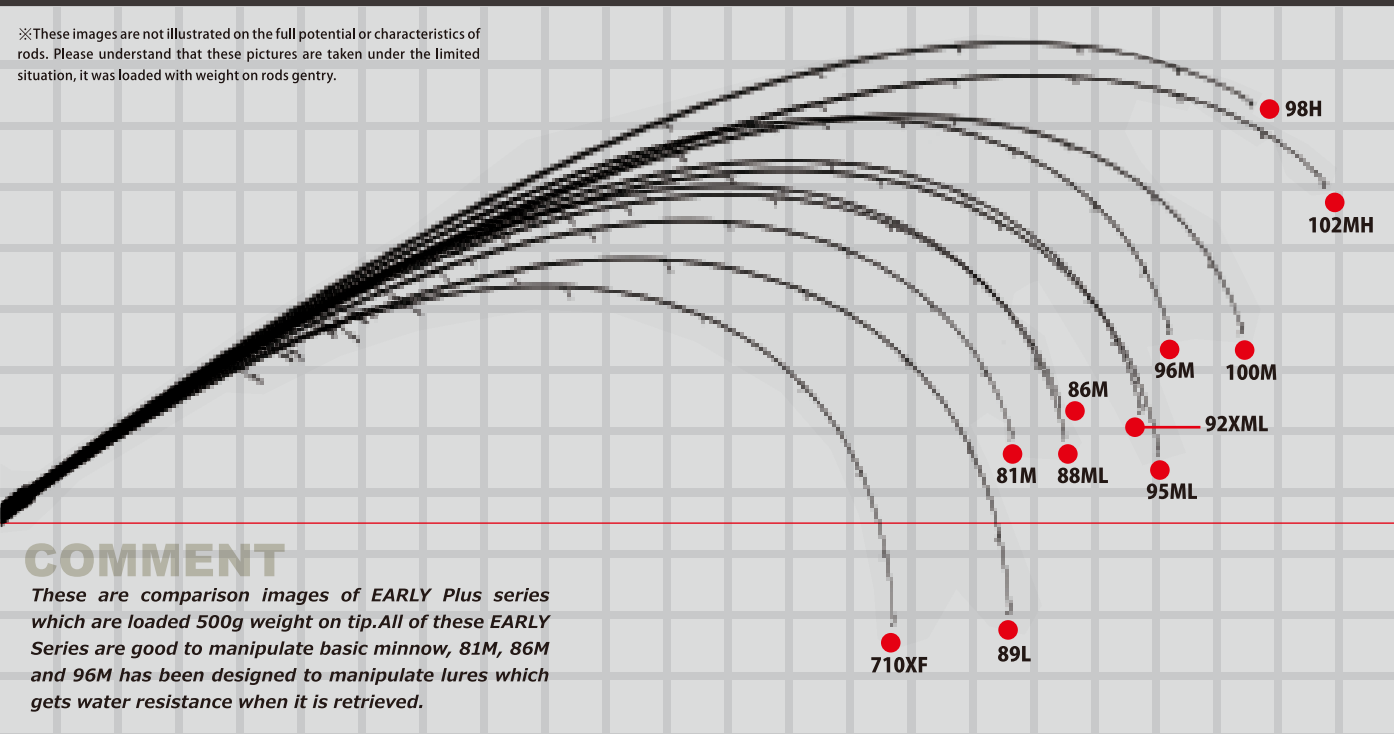
EARLY Plus 98H

Lt: **2935mm (CL:1505mm)** Wt: **224g** Lure: **18~60g** Line: **Pe1.5~3** Price:
Target : Seabass・Blue-Runner (Up to 5kg) / Lure : Big Bait・Plugs for Blue-Runner・Metal Jig / Field : Rocks・Surf・Dickes etc

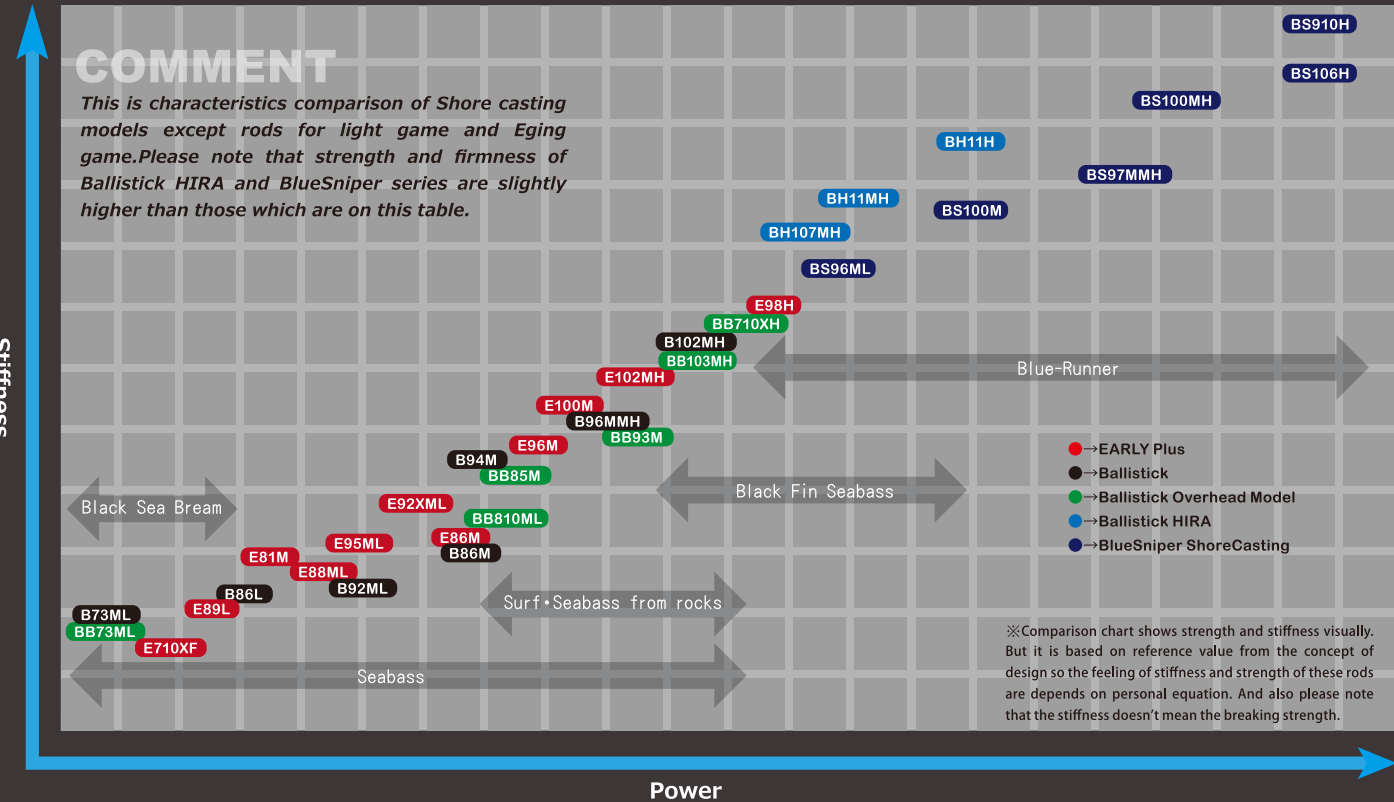


※Size of rod a.Length from reel foot to end of grip when reel is equipped. b.Whole length of grip.

EARLY Plus Bending Curve Load 500g



Shore Casting Model Comparison Table



BlueCurrent

BlueCurrent / 20Line Up / For Light Game

We have brushed up blanks of BlueCurrent series to make it fishing rod for light game with ease use as a tool to catch fish. We believe that fishing rod need to be balanced with all of these integrant as such as castability, lightness, durability and sensitivity at high level to be a tool with ease use for anglers.

For example, there is no point when you could not set hook on the mouth of fish even if you could sense micro contact of fish. To let anglers do sequence actions such as sensing signal just before the bite and prepare for strike smoothly, we have tested and adjusted BlueCurrent series so many times. We present you a fulfilling line up of BlueCurrent series including overhead models which are joined end of 2016 for light and heavy target or many kind of rock fish.

This is one of the answer that how we can support anglers who is aiming beautiful fish at various fields and situation all over the world.

Light Game

Aji & Rockfish and more

